

6 LITRE DEHUMIDIFIER

Product Instructions

Product No. 2000260

vonhaus

Let's get started!

Visit our product hub for useful tips and tricks on getting the most out of your new product.

SCAN ME



Need further help?
support@vonhaus.com

Besoin d'aide supplémentaire ?
support@vonhaus.com

Benötigen Sie weitere Hilfe?
support@vonhaus.com

Necesita más ayuda?
support@vonhaus.com

Hai bisogno di ulteriore assistenza?
support@vonhaus.com

See our full range at
www.vonhaus.com

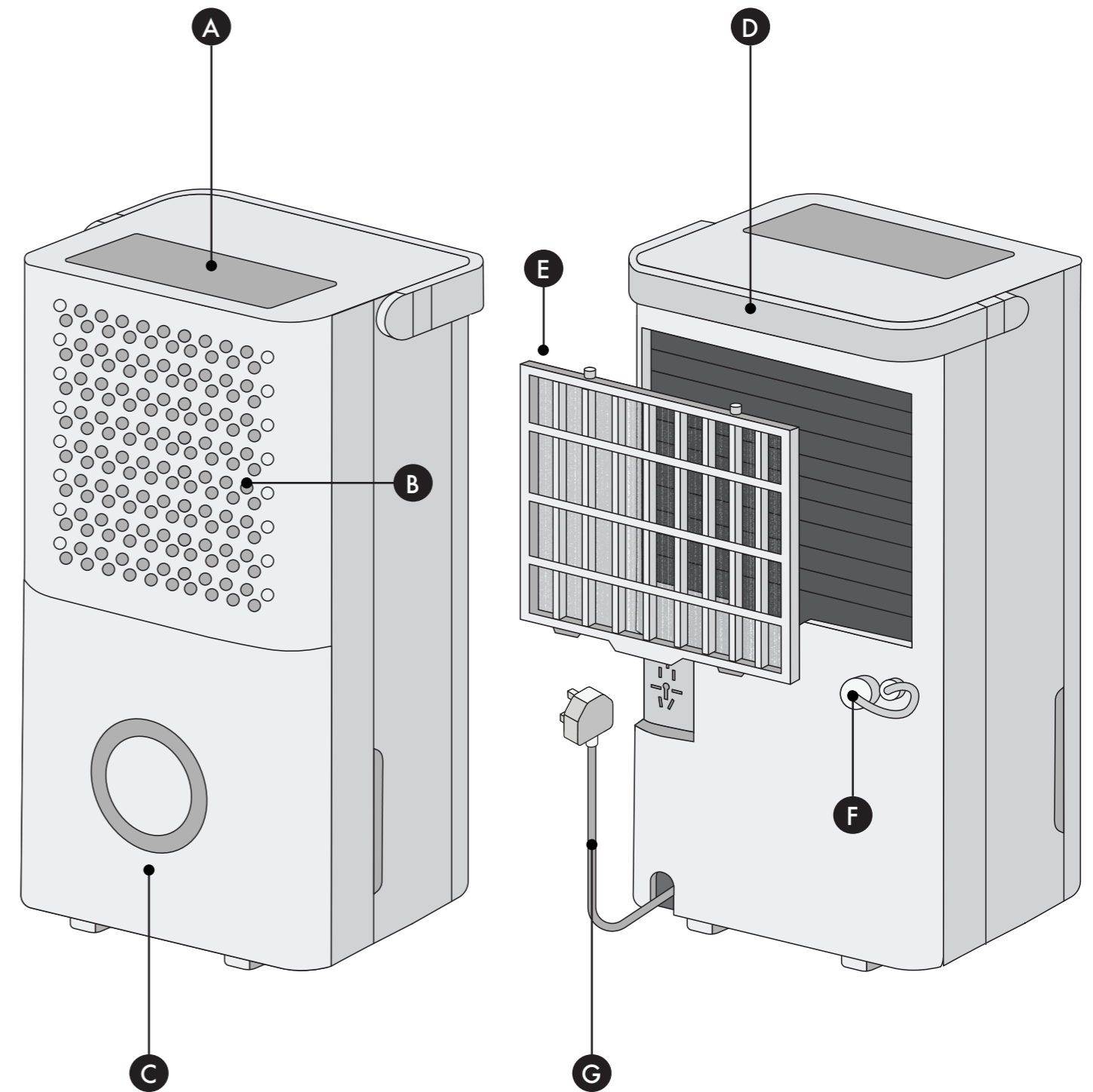
Découvrez notre gamme complète sur
www.vonhaus.com

Entdecken Sie unser gesamtes Sortiment auf
www.vonhaus.com

Descubra toda nuestra gama en
www.vonhaus.com

Scopri tutta la nostra gamma su
www.vonhaus.com

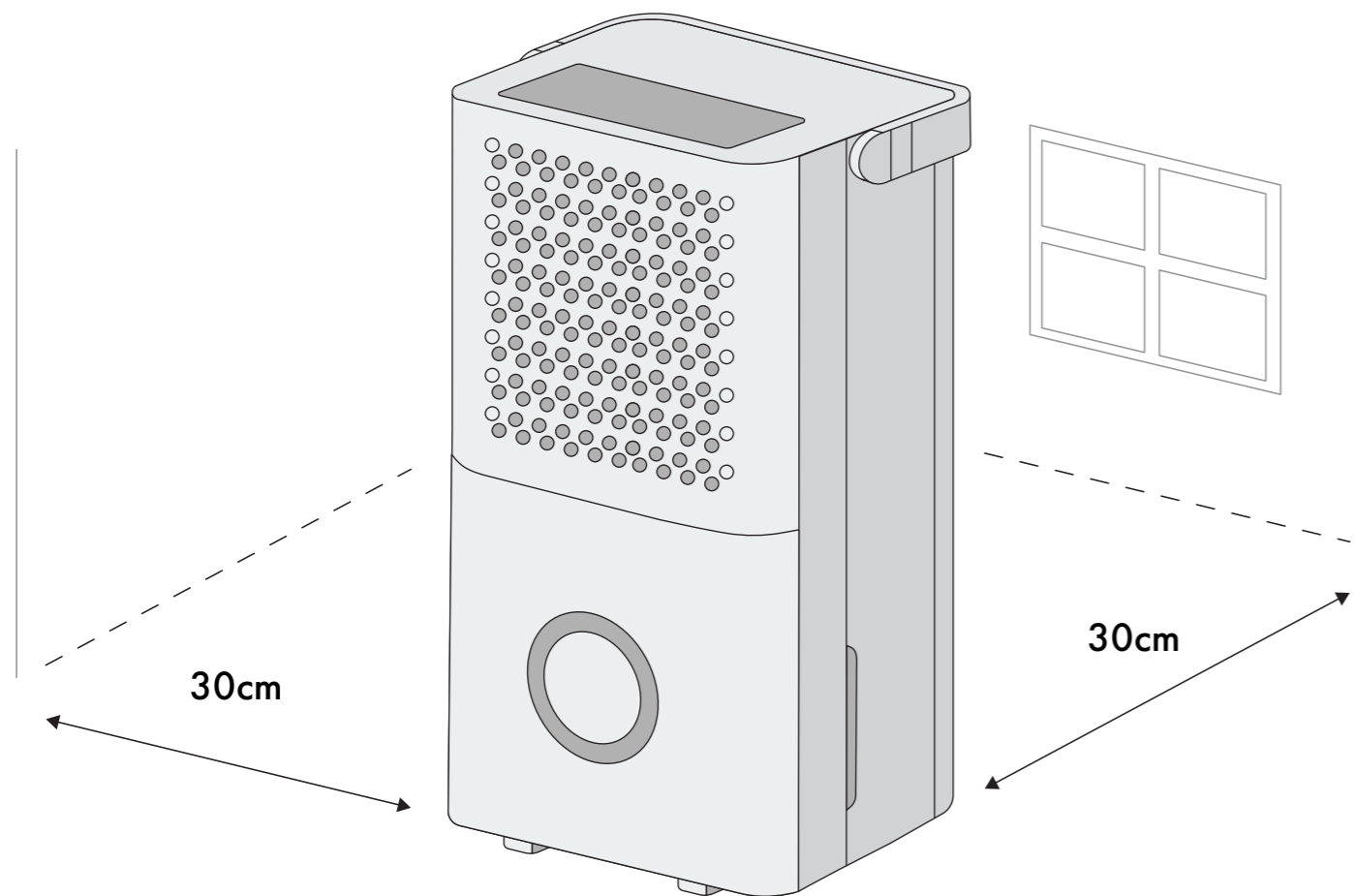
Product Diagram



A. Control Panel
B. Air Exhaust
C. Water Tank
D. Handle

E. Filter
F. Continuous Drainage Nozzle
G. Power Cable

Placement



Unit Placement

Place on a firm, level surface with at least 30cm of open space around the unit for air circulation.

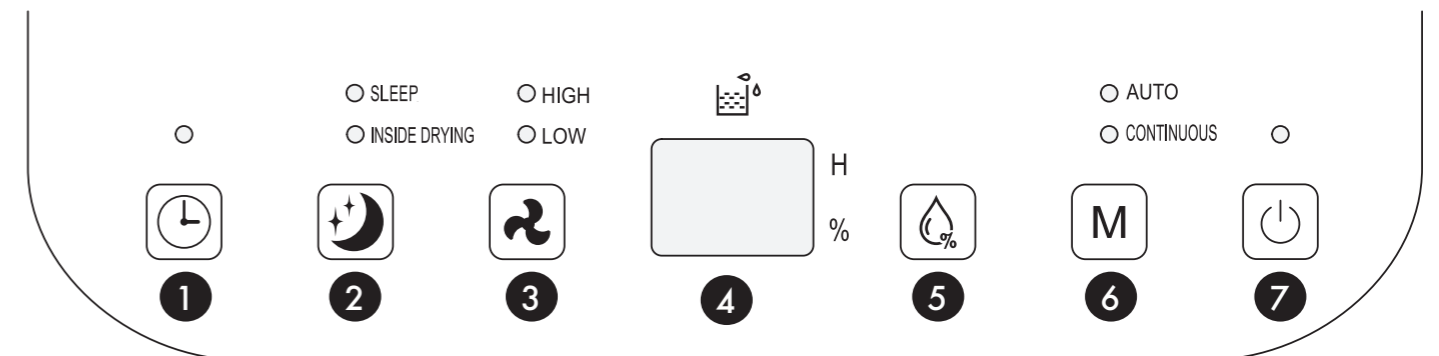
Install the unit in rooms larger than 4m².



WARNING: Avoid these locations

- Near heat sources
- Where oil or water may splash
- Direct sunlight
- Vibration or shock
- Excessive dust
- Poor ventilation (e.g., inside cabinets)

Control Panel



1. Timer

- Press this button to set the timer or cancel the timer (up to 24 hours)
- Press this button to activate the timer. The time digits will blink 5 times to confirm a timer has been set
- Each press will add 1 hour or hold the button down to scroll through the hours faster
- To see how many hours are left on the timer, click the timer button once and the number of hours remaining will show on the display screen
- To cancel the timer: press the timer button on/off once or set to 0 hours

2. Sleep Mode/ Inside Drying

- Press this button to switch between Sleep Mode and Inside Drying
- Long press this button for 3 seconds to activate Inside Drying Mode
- The corresponding indicator light will light up

Sleep Mode

- Humidity is set to 50% and operates in low fan speed

- If the actual room humidity is 5% greater than 50%, the compressor will activate and operate at low speed. If the humidity is 5% less, the compressor will stop collecting water
- Fan speed cannot be adjusted when in sleep mode

Inside Drying

- Press and hold the Sleep button for 3 seconds to activate Inside Drying
- The dehumidifier's compressor stops collecting water, and the fan runs at high speed for 30 minutes followed by a further 20 minutes at low speed. This process dries the dehumidifier prior to storage

3. Fan Speed

- Press once to switch between high and low fan speeds. The relevant indicator light will show the current setting

4. Display Screen

- Displays the current humidity level of the room
- Displays how many hours are left once the timer has been set
- Displays when Child Lock has been

Control Panel

activated

5. Humidity Set

- Set the humidity level of the room (30-80%)
- Each time you click the button, the humidity level will decrease by 5%. Hold the button down to scroll through the buttons faster

6. Mode

Press this button to switch between Auto Mode, Continuous Laundry Mode and Child Lock

Auto Mode

- When the environment exceeds the set humidity level by more than 5%, the fan and compressor will both be activated
- If the environments humidity drops 5% lower than the set humidity, the compressor will stop working
- The fan speed and humidity level can be adjusted in this mode

Continuous Laundry Mode

- The compressor and fan will continuously operate regardless of the humidity level
- The fan speed can be adjusted in this mode

Child Lock

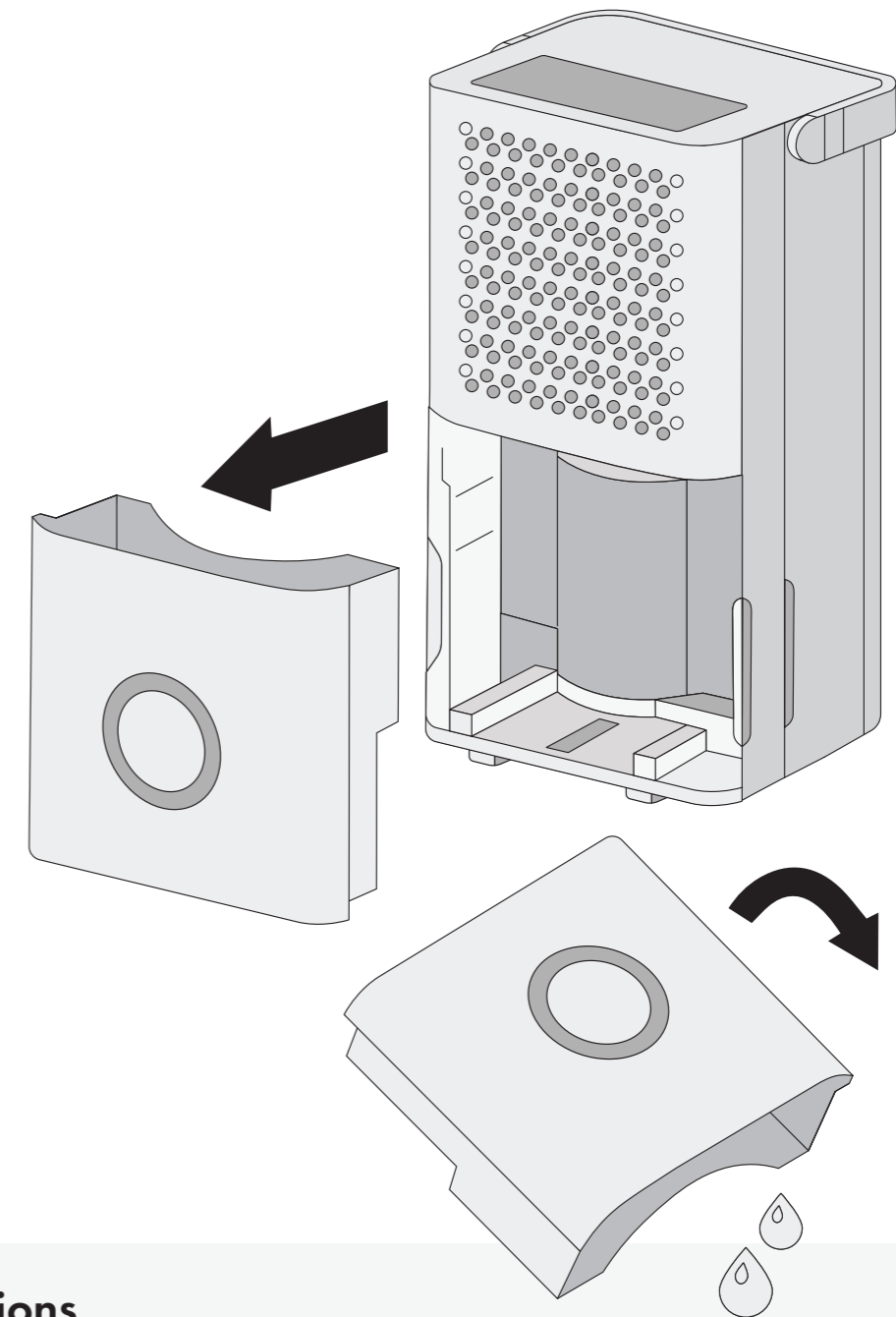
- Press and hold the Mode button for 3 seconds to activate Child Lock. This will lock the controls and prevent them from being changed for child safety
- The display screen will show LC for 5 seconds after activation to confirm this has been set
- To deactivate, click the Mode button for 3 seconds

7. On/Off

- Press to turn the dehumidifier On and Off

Draining the Tank

1



2

Instructions

1. When the water tank is full, the unit will beep and the indicator light will illuminate on the display screen. The unit will pause operation to prevent the water tank from overflowing
2. Turn the unit off and gently slide the water tank out from the main body of the dehumidifier. The unit will beep if you remove the water tank while it is still turned on

3. Empty the water tank and gently slide the water tank back in to the main body of the dehumidifier

IMPORTANT: If the Full Water Tank indicator remains on, ensure the tank has securely been placed back into the unit and the float in the tank is correctly in place

Continuous Drainage

Instructions

The humidifier offers a continuous drain option, which is ideal for humid environments.

To set up continuous draining, simply connect a drain hose to the unit.

1. Insert one end of the hose into the humidifier and place the other end in your drain area.
2. Make sure to keep the hose straight and positioned below the outlet level.
3. Double-check that the connection is secure and that nothing blocks the drain path.

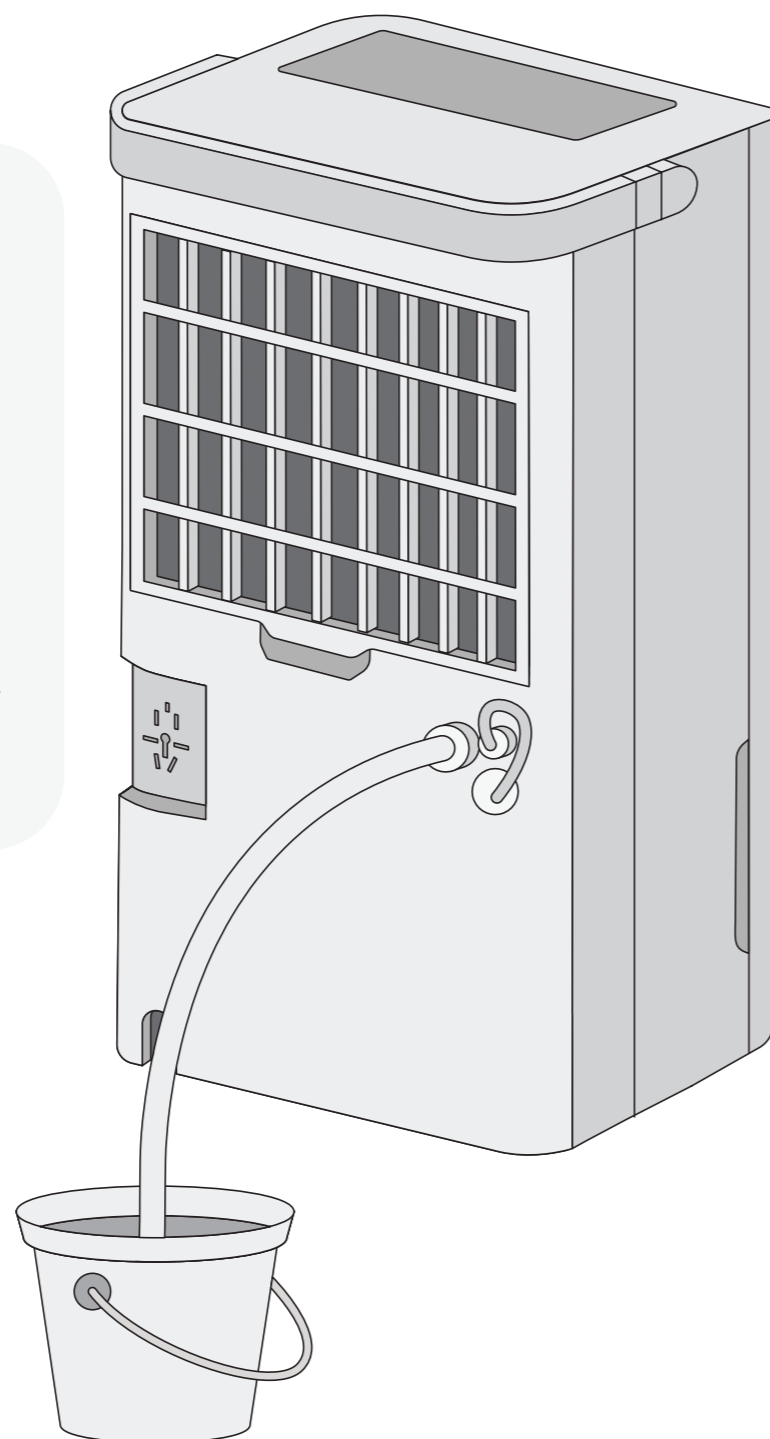
Important Notes

Ensure hose is:

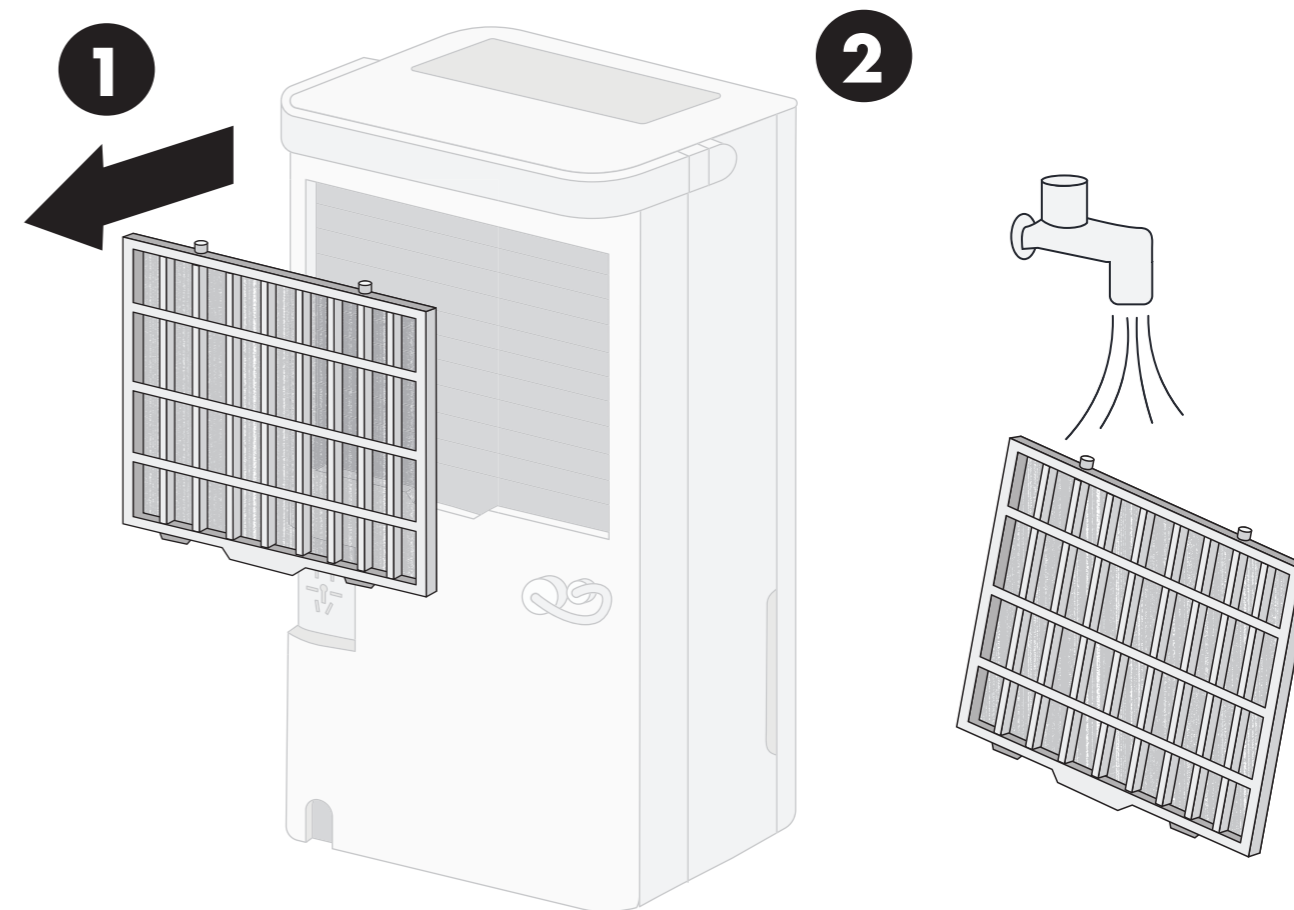
- Securely connected
- Not kinked
- Unobstructed
- Angled downward (>20°)

Don't submerge the end of the hose (prevents air lock)

WARNING: The drainage hose must not be very long (recommended 1m).



Cleaning the Air Filter



Instructions

IMPORTANT: Always turn off and unplug the unit before cleaning.

1. Remove the water tank, then gently pull the filter downwards and back from the back of the air inlet
2. Gently vacuum any dust from the filter surface
3. For heavily soiled filters, wash with mild soap and water, then leave to air dry completely
4. Reinstall the filter

Why This Matters

- Dust buildup restricts airflow
- Poor airflow reduces efficiency
- Blocked filters can damage the unit
- Never run the unit without a filter, as this can contaminate the evaporator

Additional Tips

- Clean the filter regularly (**every two weeks**)
- The filter is designed to be removable for easy cleaning
- Ensure filter is completely dry before reinstalling

Safety Information

R-290 Refrigerant

This product contains R-290 (propane) refrigerant and requires specific safety precautions:

- Only qualified technicians can service the sealed refrigerant system
- Never release refrigerant into air
- Keep away from flames, cigarettes, and ignition sources
- Use only identical parts for repairs

WARNING: R-290 is flammable, heavier than air, and odorless. Failure to follow safety guidelines could result in explosion and serious injury.

Electrical Safety

- Use only grounded power outlets
- Never pull power cord to unplug
- Avoid extension cords and adapters

Operation Safety

- Keep away from fire and flammable objects
- Don't insert objects into air outlets
- Don't touch inlet or aluminum fins
- Stop using if unit shows damage
- Avoid chemical cleaning
- Keep ventilation areas unobstructed

Installation Requirements

- Follow national wiring regulations
- Maintain minimum 4m² space for installation
- Ensure proper ventilation
- Protect connecting pipes from damage
- Install away from heat sources

WARNING: Improper use may risk fire, electric shock, or injury.



Disposal Information

WARNING: Releasing refrigerant into atmosphere is strictly forbidden!

Do not dispose of electrical appliances as unsorted municipal waste, use separate collection facilities.

Contact your local government for information regarding the collection systems available.

If electrical appliances are disposed of in landfills or dumps, hazardous substances can leak into the groundwater and get into the food chain, damaging your health and well-being.

Information

Common Problems & Solutions

Why won't my unit turn on?

If your unit won't turn on, first ensure it's properly connected to a working power outlet. Check if the water tank is full - it will need emptying before the unit can operate again.

Also verify that the room temperature is between 5°C and 35°C, as the unit won't function outside this range.

Why isn't it working effectively?

If the dehumidifier isn't working effectively, the air filter may need cleaning, or the air vents might be blocked. Check both the intake and exhaust vents for any obstructions that could be restricting airflow.

Why is it making unusual noise?

Unusual noise usually indicates the unit isn't placed on a level surface. Ensure it's sitting flat and stable. A dirty air filter can also cause noise issues, so check if it needs cleaning.

Error Codes

FL: Water Tank Full

- Empty the water tank
- Or check if the tank is fitted properly

E2 – Temperature Sensor Problem

Sensor malfunction - contact support@vonhaus.com

P1 – Machine is Defrosting

- Room is too cold and ice is forming inside
- Machine will work normally after defrosting
- Try warming the room by 2-4 degrees to help the machine work better

Information

Customer Service

If you are having difficulty using this product and require support, please contact support@vonhaus.com

Warranty

To register your product and find out if you qualify for a free extended warranty please go to www.vonhaus.com/warranty

Please retain a proof of purchase receipt or statement as proof of the purchase date.

The warranty only applies if the product is used solely in the manner indicated in the warnings page of this manual, and all other instructions have been followed accurately.

Any abuse of the product or the manner in which it is used will invalidate the warranty.

Returns

Returned goods will not be accepted unless re-packaged in its original packaging and accompanied by a relevant and completed returns form. This does not affect your statutory rights.

No rights are given under this warranty to a person acquiring the appliance second-hand or for commercial or communal use.

Copyright

All material in this instruction manual are copyrighted by DOMU Brands.

Any unauthorised use may violate worldwide copyright, trademark, and other laws.

Thank You

Thank you for purchasing your product/appliance.

Should you require assistance with your purchase, please contact us at support@vonhaus.com

VonHaus is a registered trademark of DOMU Brands Ltd.

Made in China for DOMU Brands Ltd.
Unit 30, Stakehill Industrial Estate
Middleton, Manchester, M24 2RW

EU Authorised Representative

Authorised Representative Service
77 Camden Street Lower
Dublin, D02 XE80
Ireland

Let's get started!

Visit our product hub for useful tips and tricks on getting the most out of your new product.

SCAN ME

