

2500491/2500492



Please read all instructions carefully before use and retain for future reference.



CAUTION Do not immerse in water.



Do not cover.



CAUTION Do not insert fingers into the grill.



Do not use outdoors.



CAUTION Potential finger trap/pinchment points

Let's get started!

Visit our product hub for useful tips and tricks on getting the most out of your new product.

SCAN ME





Please read all instructions carefully before use and retain for future reference.

INTENDED USE Only operate the appliance for its intended purpose and within the parameters specified in this manual. This appliance is for domestic use only. Do not use outdoors or on wet surfaces.

This appliance is not intended for use by persons with reduced physical, sensory or mental capabilities, or lack of experience and knowledge, unless supervised or given appropriate instruction concerning the product's use by a person responsible for their safety.

The appliance is not intended to be operated by means of an external timer or separate remote-control system.

GENERAL SAFETY Do not allow to be used as a toy. Children should be supervised to ensure they do not play with the appliance.

If the appliance is not functioning properly, has been dropped, damaged, left outdoors, or immersed in liquid, do not use, contact DOMU Brands Customer Services.

Do not use the appliance if any parts appear to be faulty, missing or damaged.

Ensure all parts are securely attached as instructed by this instruction manual before use.

CABLES AND PLUGS Check to ensure your electricity supply matches that shown on the rating plate. This product should only be used as rated. Preferably, the socket outlet should be protected by a Residual Current Device RCD (UK/EU) Ground Fault Indicator (US).

Do not use with a damaged cable or plug. If the supply cable is damaged, it must be replaced by a qualified engineer or authorised service agent in order to avoid a hazard. The use of an extension cable is not recommended.

Do not handle the plug or appliance with wet hands.

Keep the cable away from heated surfaces.

Do not let the cable hang over the edge of the table or countertop where it could be pulled on inadvertently by children or pets.

Do not pull the cable around sharp edges or corners.

Do not leave unattended when plugged in. Unplug from outlet when not in use.

Turn off all controls before unplugging.

Do not unplug by pulling on the cable. To unplug, grasp the plug, not the cable.

Always unplug before performing user maintenance, connecting or disconnecting attachments, or changing accessories.

Ensure the cable is stored safely to prevent hazards.

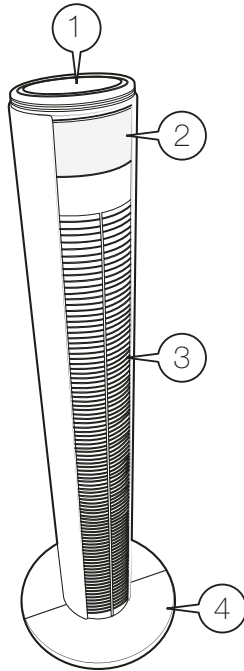
TECHNICAL SPECIFICATION

Rated Voltage 220-240V ~

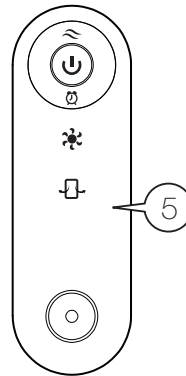
Rated Power 60W

Rated Frequency 50/60/Hz

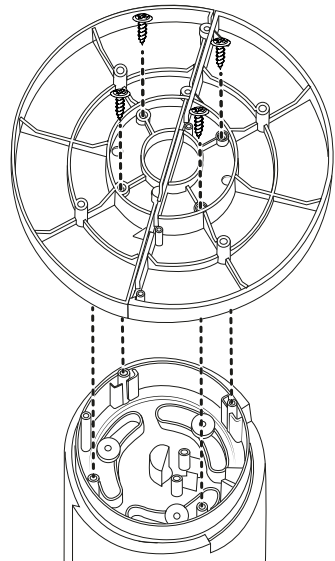
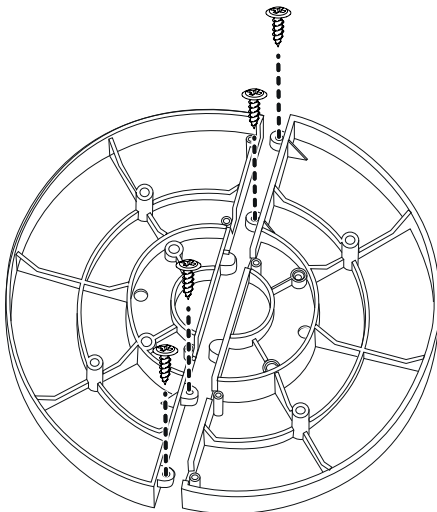
COMPONENTS



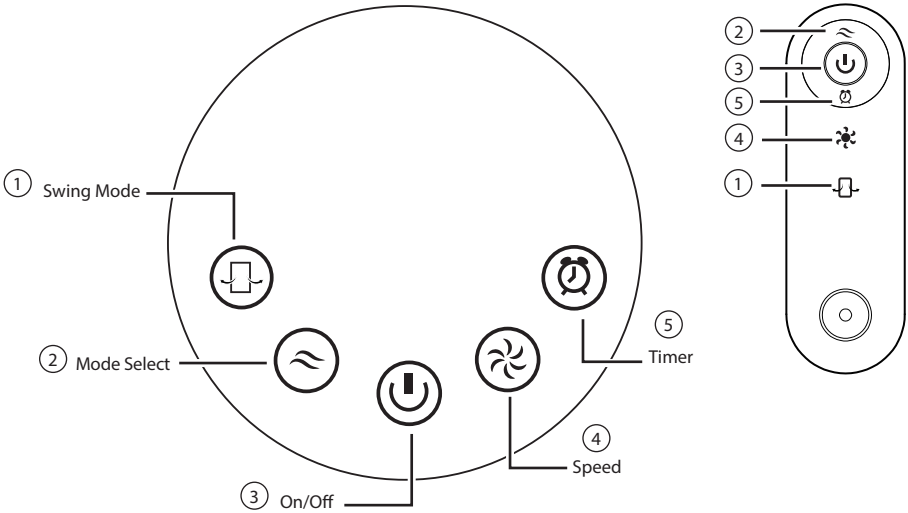
1. Control Panel
2. LCD Display
3. Air Outlet
4. Base
5. Remote Control
6. Screws x8 (not shown)



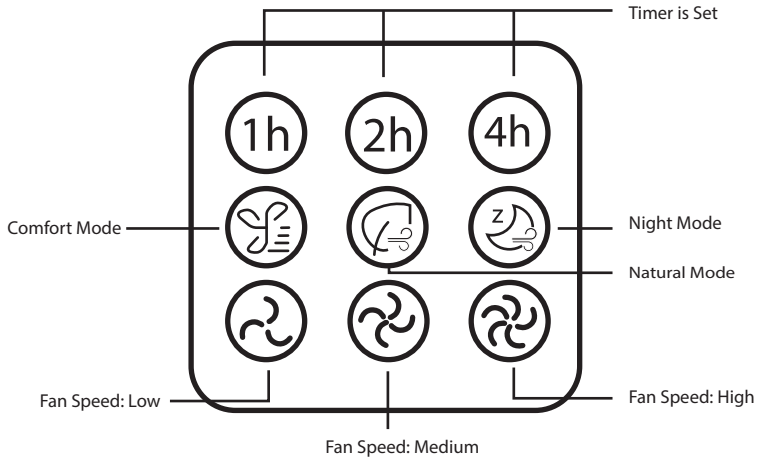
ASSEMBLY



CONTROLS



DIGITAL DISPLAY



OPERATION



Press once to activate the fan, It will default into Medium Mode / Low Speed .
The room temperature will be displayed.



Comfort Mode - This mode has three types of air cycles: Low, Med, High.



Natural (intermittent) Mode

With the Fan speed set to low it will cycle on off every 5 seconds.

Fan Speed Medium - the fan speed will cycle through every 5 seconds to Medium, Low, Medium, Stop, Low Medium, Low, stop.

Fan Speed set to High - it will spend 5 seconds each at Medium, Low, High, Medium, High, Low, High, Stop and repeat.



Night Mode - The fan speed gradually decreases every 30mins.

Fan Speed Low - The fan will run the same as in Low Nature Mode.

Fan Speed Medium - The fan will operate in Medium Nature Mode the switch to low.

Fan Speed High - The fan will operate for 30mins in High, 30mins in Medium then switch to Low.



Speed Selection, cycles through 3 levels



Low



Med



High



This button allows you to enter the 'timer mode'. Press to increase the number of hours (1, 2 to 7) you wish the fan to remain operational.

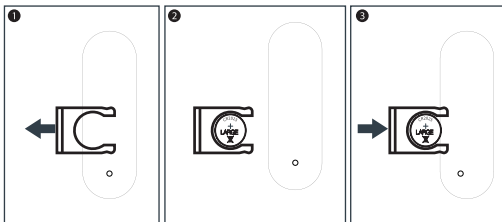


The fan will operate for 1/2/4/5/6/7 hour(s).



Turns Oscillation On / Off

REPLACING BATTERY



CR2025

To remove the battery compartment, gently pull out the compartment using your fingers.
Place 1 x CR2025 (3V) battery into the designated slot, ensuring the correct polarity as illustrated.
Push the compartment back into place.

⚠ BATTERY WARNING

KEEP OUT OF REACH OF CHILDREN

Swallowing can lead to chemical burns, perforation of soft tissue, and death. Severe burns can occur within 2 hours of ingestion. Seek medical attention immediately.



MAINTENANCE

To remove dust on external surfaces, wipe the Guard and Base with a damp (not wet) lint-free cloth rinsed in hot soapy water only.

CAUTION: Do not use any harsh detergent or abrasive cleaners.

WARNING! Do not spray with any liquids or submerge in liquid or water.



DISPOSAL INFORMATION Please recycle where facilities exist. Check with your local authority for recycling advice.

CUSTOMER SERVICE If you are having difficulty using this product and require support, please contact support@vonhaus.com

WARRANTY To register your product and find out if you qualify for a free extended warranty please go to www.vonhaus.com/warranty. Please retain a proof of purchase receipt or statement as proof of the purchase date. The warranty only applies if the product is used solely in the manner indicated in the warnings page of this manual, and all other instructions have been followed accurately. Any abuse of the product or the manner in which it is used will invalidate the warranty. Returned goods will not be accepted unless re-packaged in its original packaging and accompanied by a relevant and completed returns form. This does not affect your statutory rights. No rights are given under this warranty to a person acquiring the appliance second-hand or for commercial or communal use.

COPYRIGHT All material in this instruction manual are copyrighted by DOMU Brands. Any unauthorised use may violate worldwide copyright, trademark, and other laws.

THANK YOU

Thank you for purchasing your product/appliance. Should you require further assistance with your purchase, you can contact us at support@vonhaus.com

VonHaus is a registered trademark of DOMU Brands Ltd. Made in China for DOMU Brands. Unit 30, Stakehill Industrial Estate, Middleton, Manchester M24 2RW.

EU Authorised Representative: Authorised Representative Service, 77 Camden Street Lower, Dublin, D02 XE80, Ireland.