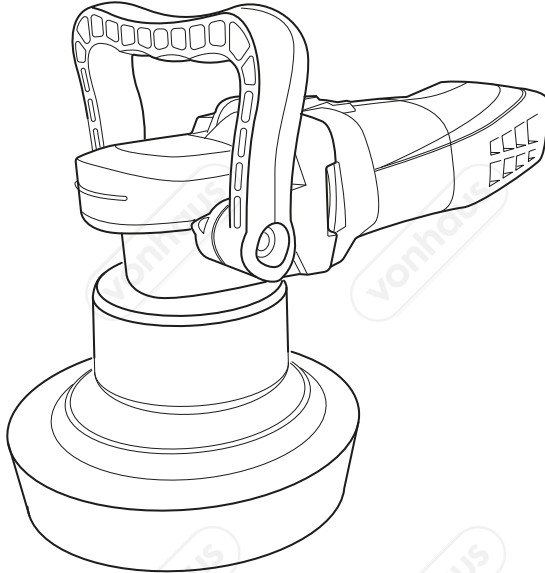


# 600W DUAL ACTION POLISHER WITH ACCESSORY SET

3500023 - Instruction Manual



# CONTENTS

---

Safety Instructions

**1**

Safety Instructions

**2**

Safety Instructions/Safety Symbols

**3**

Technical Specification/Product Specification

**4**

Before First Use

**5**

Before First Use

**6**



---

Operation

**7**

Adjusting the Rotation Speed/Applications

**8**

Handling Techniques

**9**

Polishing Tips/Common Mistakes to Avoid

**10**

Cleaning & Maintenance/Troubleshooting

**11**

Warranty

**12**



# ⚠ WARNING ⚠

PLEASE READ THESE INSTRUCTIONS CAREFULLY AND KEEP FOR FUTURE REFERENCE

## GENERAL SAFETY INFORMATION.

**WARNING!** Read all safety warnings and all instructions. Failure to follow the warnings and instructions may result in electric shock, fire and/or serious injury.

Please retain all warnings and instructions for future reference.

The term "power tool" in the warnings refers to your mains-operated (corded) power tool or battery-operated (cordless) power tool.

## WORK AREA SAFETY.

Keep your work area clean and well lit. Cluttered or dark areas invite accidents.

Do not operate power tools in explosive atmospheres such as in the presence of flammable liquids, gases or dust. Power tools create sparks which may ignite the dust or fumes.

Keep bystanders, children and animals away while operating the power tool. Distractions can cause you to lose control.

## ELECTRICAL SAFETY.

Power tool plugs must match the outlet. Never modify the plug in any way. Do not use any adaptor plugs with earthed (grounded) power tools. Unmodified plugs and matching outlets will reduce risk of electric shock.

Avoid body contact with earthed or grounded surfaces such as pipes, radiators, ranges and refrigerators. There is an increased risk of electric shock if your body is earthed or grounded.

Do not expose power tools to rain or wet conditions. Water entering the power tool will increase the risk of electric shock.

Do not abuse the cord. Never use the cord for carrying, pulling or unplugging

the power tool.

Keep the cord away from heat, oil, sharp edges and moving parts. Damaged or entangled cords increase risk of electric shock.

When operating a power tool outdoors, use an extension cord suitable for outdoor use to reduce the risk of electric shock.

## PERSONAL SAFETY.

Stay alert, watch what you are doing and use common sense when operating a power tool. Do not use a power tool while you are tired or under the influence of drugs, alcohol or medication. A moment of inattention while operating power tools may result in serious personal injury.

Use personal protective equipment. Always wear eye protection. Protective equipment such as a dust mask, non-skid safety shoes, hard hat, or hearing protection used for appropriate conditions will reduce personal injuries.

Prevent unintentional starting. Ensure the switch is in the off position before connecting to the power source and/or battery pack, picking up or carrying the tool. Carrying power tools with your finger on the switch or energising power tools that are switched on invites accidents.

Remove any adjusting key or wrench before turning the power tool on. A wrench or key left attached to a rotating part of the power tool may result in personal injury.

Do not overreach. Keep proper footing and balance at all times. This enables better control of the power tool in unexpected situations.

Dress appropriately. Do not wear loose clothing or jewellery. Keep your hair,

# ⚠️ WARNING ⚠️

PLEASE READ THESE INSTRUCTIONS CAREFULLY AND KEEP FOR FUTURE REFERENCE

clothing and gloves away from moving parts to prevent them from becoming caught in the tool.

If devices are provided for the connection of dust extraction and collection facilities, ensure that these are connected and properly used to reduce dust-related hazards.

## **POWER TOOL USE AND CARE.**

Do not force the power tool. Use the correct power tool for your application. The correct power tool will do the job better and safer at the rate for which it was designed.

Do not use the power tool if the switch does not turn it on and off. A power tool that cannot be controlled with the switch is dangerous and must be repaired.

Disconnect the plug from the power source and/or the battery back from the power tool before making any adjustments, changing accessories or storing. Such preventative safety measures reduce the risk of starting the power tool accidentally.

Store idle power tools out of reach of children and do not allow persons unfamiliar with the power tool or these instructions to operate the power tool. Power tools are dangerous in the hands of untrained users.

Maintain the power tool. Check for misalignment or binding of moving parts, breakage of parts and any other condition that may affect the power tools operation. If damaged, have the power tool repaired before use. Many accidents are caused by poorly maintained power tools.

This tool is not intended for use by persons with reduced physical, sensory or mental capabilities, or lack of experience and knowledge, unless they have been given supervision or instructions concerning use of the tool by a person responsible for their safety.

Children should be supervised to ensure they do not play with the tool.

## **SERVICE.**

Have your power tool serviced by a qualified repair person using identical replacement parts only to ensure that the safety of the power tool is maintained.

## **ADDITIONAL SAFETY INFORMATION.**

**WARNING** Know your Polisher. Do not plug the tool into the power source until you have read and understand the information in this Instruction Manual. Learn the tool's applications and limitations, as well as the specific potential hazards related to this tool to reduce the risk of electric shock, fire or serious injury.

Always wear eye protection. Any power tool can throw foreign objects into your eyes and cause permanent eye damage. Always wear safety goggles (not glasses) that comply with ANSI safety standard Z87.1. Every day glasses have only impact resistant lenses. They are not safety glasses.

**WARNING** Wearing glasses or goggles not in compliance with ANSI Z87.1 when operating this tool could cause serious injury.

**WARNING** Only use accessories designed for use with this Polisher.

# ⚠️ WARNING ⚠️

PLEASE READ & UNDERSTAND THESE INSTRUCTIONS CAREFULLY AND KEEP FOR FUTURE REFERENCE

The use of improper accessories may result in injury to the operator or damage the tool.

**WARNING** If any part is missing or damaged, do not plug the tool into the missing or damaged part is replaced.

Failure to follow this instruction could result in serious personal injury.

## ⚠️ SAFETY SYMBOLS ⚠️



**Read and understand the Instruction Manual** before use.

Always refer to Instruction Manual if in any doubt of operation, maintenance and care.



Always wear eye protection.



Always wear protective gloves.



Do not use in wet/adverse weather conditions.



Wear a dust mask

# TECHNICAL SPECIFICATION

## VOLTAGE

V  
230-240

## RATED POWER

W  
600

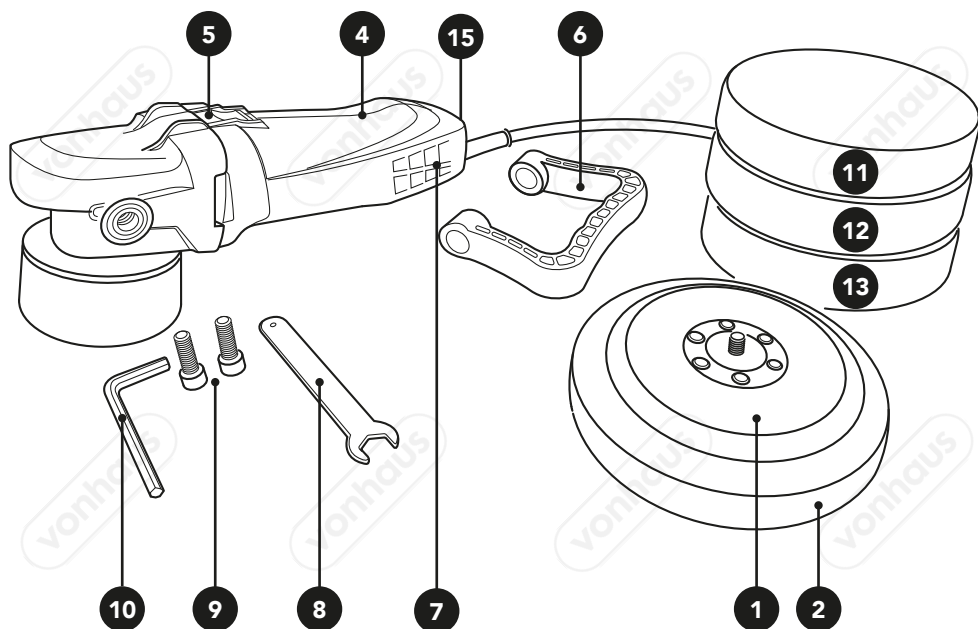
## NO LOAD SPEED

min<sup>-1</sup>  
1500-6800

## FREQUENCY

Hz  
50

# PRODUCT SPECIFICATION



1. Backing Plate
2. Soft Polishing Pad (Black)
3. Speed Adjuster (see page 8)
4. Front Grip
5. Power Switch
6. Adjustable 'D' Handle
7. Side Vents
8. Locking Spanner
9. Hex Bolts (x2)
10. Hex Key
11. Hard Polishing Pad (Red)
12. Medium Polishing Pad (Yellow)
13. Medium Polishing Pad (Yellow)
14. Spindle (see page 6)
15. Rotation Speed Dial (see page 8)
16. Microfibre Cloth (not shown)
17. Polishing Mitten - Dry Finish (not shown)

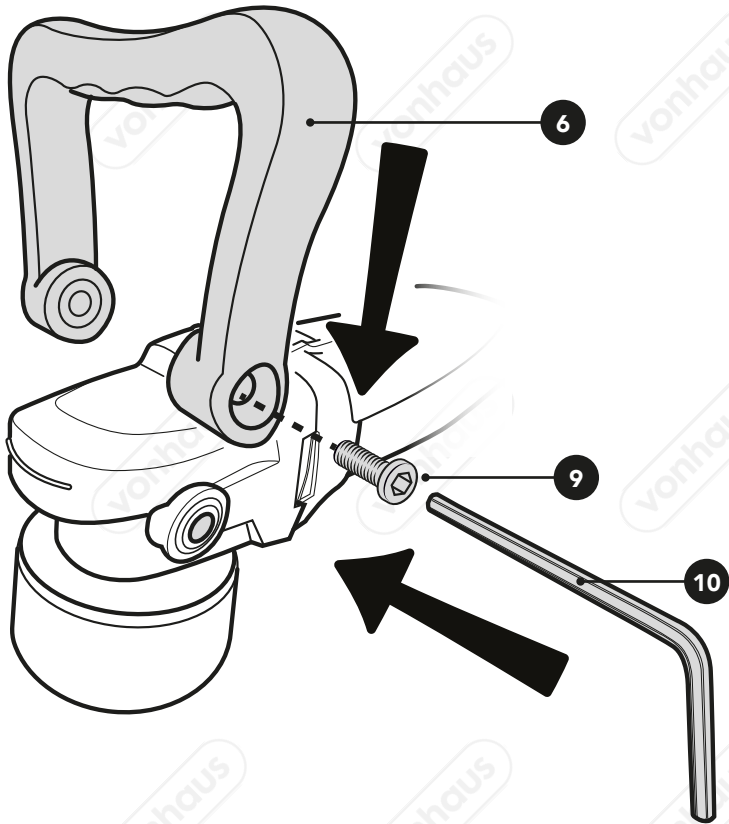
# BEFORE FIRST USE

**IMPORTANT** Always ensure the Polisher is disconnected from the mains supply before performing any maintenance, cleaning or assembly tasks.

## ASSEMBLING THE ADJUSTABLE D HANDLE

The **ADJUSTABLE D HANDLE (6)** must be fitted to the machine before use:

- Use the **HEX BOLTS (9)** provided to fit the **ADJUSTABLE D HANDLE (6)** via the fixing holes to either side at the front of the Polisher.
- Use the supplied **HEX BOLTS (9)** to tighten the bolts that secure the handle in position.





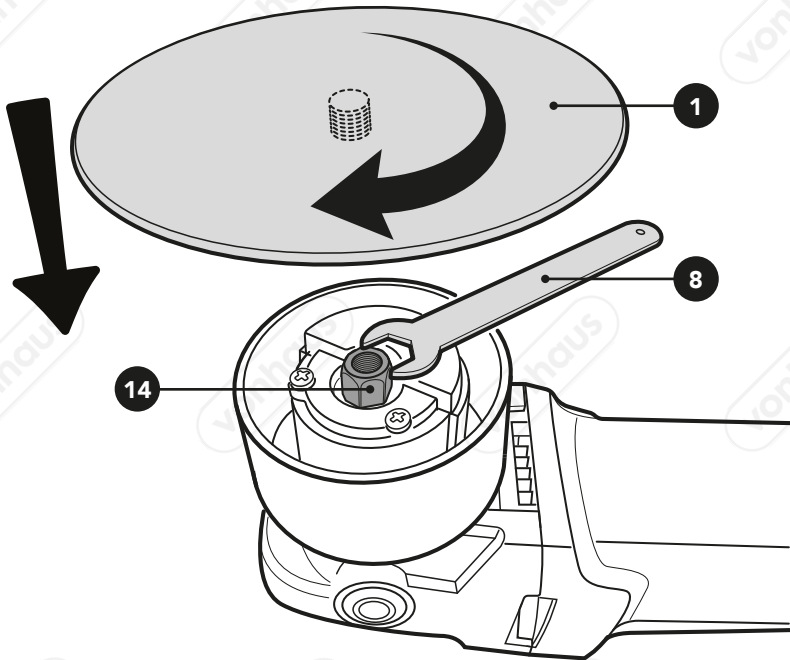
# BEFORE FIRST USE

**IMPORTANT** Always ensure the Polisher is disconnected from the mains supply before performing any maintenance, cleaning or assembly tasks.

## FITTING THE BACKING PAD

The Backing Pad must be securely fitted to the **SPINDLE (14)** before use:

- Use the **LOCKING SPANNER (8)** to hold the **SPINDLE (14)** thread secure
- Rotate the **BACKING PLATE (1)** in a clockwise direction to secure the **BACKING PAD (1)** to the **SPINDLE (14)** assembly.
- To remove, use the **LOCKING SPANNER (8)** to hold the spindle thread secure. Rotate the **BACKING PAD (1)** in an anti-clockwise direction to remove.



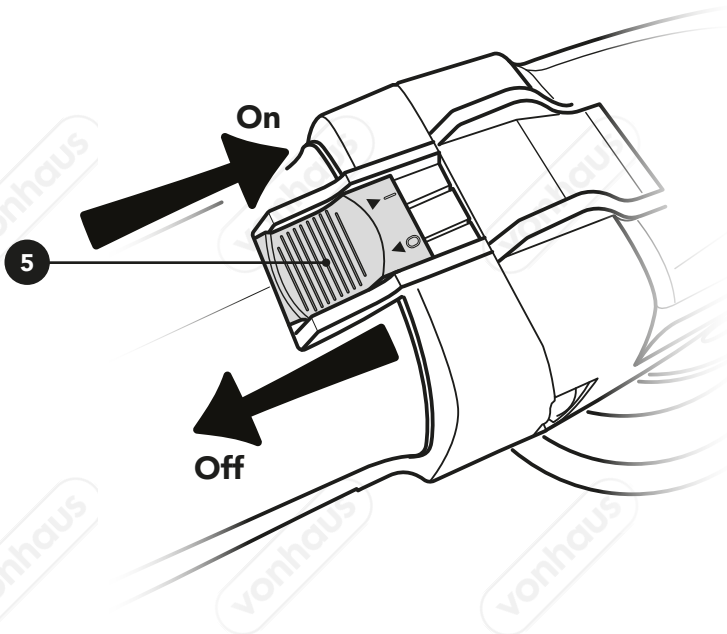
# OPERATION

**WARNING** Always use adequate protective equipment, including eye protection, respiratory protection and hearing protection, when working with this tool.

- Connect the machine to the mains power supply.
- To start the machine, slide the **POWER SWITCH (5)** to the **I** (on position). The motor will start and take a few moments to reach full operating speed.
- To stop the machine, slide the **POWER SWITCH (5)** to the **0** (off position).

**NOTE** This Polisher is fitted with a Soft Start Function to help spread polish slowly before going to full speed.

**WARNING!** Always wait until the machine has come to a standstill before putting it down to rest.



# ADJUSTING THE ROTATION SPEED

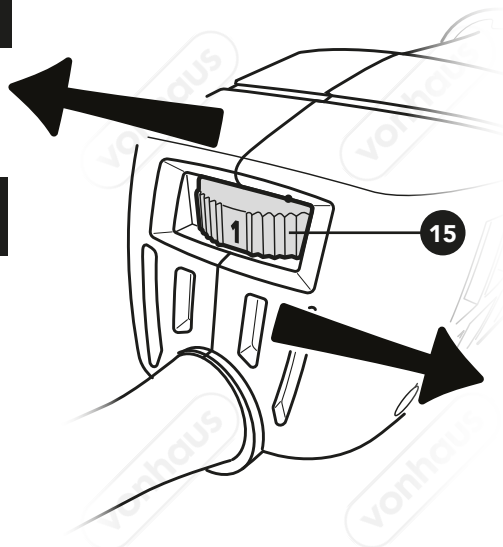
**WARNING** When Polishing and detailing Vehicle surfaces, never apply too much pressure.

**IMPORTANT** Failure to adhere to this warning may result in damage to your vehicle.

The speed of the machine is controlled using the **ROTATION SPEED DIAL (15)**. A higher number indicates a higher rotation speed.

**WARNING** Always set the rotation speed on the control dial to the lowest setting to begin.

**NOTE** Speeds 1-6 has a rotation speed between 1500- 6800 RPM.



## APPLICATIONS

SPEED CONTROL DIAL SETTING	TECHNIQUE	APPLICATION
1	POLISHING	Vehicle paintwork. Be Cautious with plastic panels
3-6	BUFFING	Kitchen/Bathroom Tiles
5-6	BUFFING/POLISHING	Aluminium & Stainless Steel

# HANDLING TECHNIQUES

**IMPORTANT** Below will outline the correct procedures and precautions to take. **Please read the following guide to ensure correct usage of the Polisher.**

## WORKING WITH CAR PAINT

- Spend time centering the pad on the Pad Base.
- Spin it at the lowest setting (1) to ensure it is properly centred. Higher speeds can give the illusion the pad is centred as the centrifugal forces force the foam out slightly making it appear more central.

**TECHNIQUE** The Polisher should be moved with the right arm and the left hand should only be used to hold the Polisher head to the paintwork and apply pressure. Practice one handed to ensure you are using the right arm to move the polisher.

- The Polisher should be moved from left to right in an arc.
- By moving it to the right it naturally moves upwards. By moving to the left it naturally arcs downwards.
- Your arm should move slowly and smoothly keeping the pad flat to the paint at all times.

**NOTE** Paint is thinner at the edges of panels so care must be taken. If polishing across edges (such as on a car bonnet where the line of the bonnet meets the front wings) then tape off the edge of the panel not being polished. Alternatively lift the bonnet up and have someone hold it so you can confidently polish up to the edge without running over the edge of the front wing.

## WORKING WITH PLASTICS

Plastics will not cope with the heat produced like a metal panel can. It can be easy to 'over cook' the painted plastic causing the surface to wrinkle up. Once the plastic reaches a certain heat it will wrinkle up rapidly and without warning. This is irrecoverable.

It is recommended to test this on a plastic scrap pane so you can gauge the amount of Rotation Speed required.

- On curved panels this is not possible so more of the focus is on smooth, non jerky arm movements. This is essential.
- It is recommended to try and stand with your back straight ensuring that you don't over extend yourself, moving the 'buffing arc' a little wider than the distance between your shoulders.
- It is often useful to spray a dry pad with a rapid detailer spray first to lubricate the pad and prevent too much polish from soaking in. To take this one stage further spray a dry pad with detail spray and work it onto a panel until the pad is warm and slightly moist. This will season the pad for more effective application.

**PRESSURE** The Polisher can for the most part work under its own weight or very light pressure from the left hand. Stubborn swirls may need more pressure.

- When working on side panels and curved panels, the left hand will need to support the head of the polisher and will require the application of more pressure. More pressure will be needed here as the pad will not have the weight of the polisher over it. Again, move the polisher in arc like strokes.

**IMPORTANT** Stop after each pass and allow the plastic to cool before attempting another pass.

**WARNING** If too higher speed or pressure is used, there is a very high risk of burning through paintwork which is irreparable. DOMU Brands cannot be held responsible for this.

# POLISHING TIPS

---

- Ensure that the area to be polished is clean and dry.
- Choose only polishing compounds that are compatible with the material to be polished, and with the method of application. Read and understand all information supplied with your polishing compound before use.
- If using polishing sponges, apply polishing compound evenly to the polishing sponge and place the sponge against the work surface.
- Hold the machine securely, using both hands, by the handles provided.
- The polishing sponge should make only light contact with the work surface
- Switch on the machine, and work across the surface using a wide 'sweeping' motion. Stop and apply extra compound as required. When the entire surface has been covered, stop the machine and allow the compound to dry (follow manufacturer's guidance)
- Attach a clean polishing bonnet to the machine and work across the surface as before, until all visible polishing compound is removed.

## COMMON MISTAKES TO AVOID

---

### **INCOMPLETE POLISH BREAKDOWN**

A good indication of when Polish is fully broken down is when the polish has gone clear and is very easy to wipe off.

**IMPORTANT:** Ensure any unbroken polish pushed to the outer edges of your work area are not picked up by the pad in the final pass as this will not break down the polish resulting in holograms on the finish.

### **SWIRLS**

Caused by using too harsh a polish that is not broken down properly. If this happens you may have used too much polish or it may have dried.

If this happens try removing the polish residue from the panel, spritz the pad with Rapid Detailer only (no more polish) and polish again using the remnants of the polish left in the pad to break it down properly.

### **HOLOGRAMS**

Holograms or micro marring are again imparted due to polish that hasn't been properly broken down or too high speeds. Following the advice above should cure these.

### **BUFFER HOP**

Buffer Hop is when the Rotary Polisher jumps across the paints surface usually due to insufficient polish and or lubrication and as the foam pad 'bites' the paint it jumps.

Try spreading the polish more evenly across the pad, add more polish or Rapid Detailer.

### **SPLATTER**

Splatter is a sign that you've used too much polish or the Rotation Speed needs reducing.

# CLEANING & MAINTENANCE

**WARNING** Always disconnect from the power supply before carrying out any inspection, maintenance or cleaning.

## GENERAL INSPECTION

- Keep your tool clean at all times. Dirt and dust will cause internal parts to wear quickly, and shorten the Polisher's service life.
- Clean the body of your machine with a soft brush, or dry cloth.
- Never use caustic agents to clean plastic parts. If dry cleaning is not sufficient, a mild detergent on a damp cloth is recommended.
- Water must never come into contact with the tool
- Ensure the tool is thoroughly dry before using it
- If available, use clean, dry, compressed air to blow through the ventilation holes (where applicable)

**NOTE** Be especially careful to clean the machine thoroughly if used for both wood and metal. Sparks from metal work can easily ignite wood dust.

# TROUBLESHOOTING

PROBLEM	SOLUTION
<b>THE TOOL WILL NOT START</b>	Ensure the tool is switched on and connected to mains power. Activate the <b>POWER SWITCH (5)</b> . Check the fuse and replace if necessary.
<b>THE TOOL KEEPS KICKING/STALLING</b>	Relieve some pressure on the polisher, do not exert extra force. Let the polisher do the job.
<b>EXCESSIVE VIBRATION</b>	If excessive noise continues, discontinue use and seek repairs.  The material is too thick and is placing strain on the motor.
<b>EXCESSIVE NOISE</b>	Too much force is being exerted on the polisher, use less force.
<b>THE TOOL IS OVERHEATING</b>	Allow the polisher to cool before using again.

If you are having difficulty using your product and require support, please contact [hello@domu.co.uk](mailto:hello@domu.co.uk)

# DISPOSAL INFORMATION

---

Please recycle where facilities exist. Check with your local authority for recycling advice.

## WARRANTY

---

This new VonHaus product has a warranty period of 12 months beginning at the date of purchase. Please retain a proof of purchase receipt or statement as proof of the purchase date.

The warranty only applies if the product is used solely in the manner indicated in the Warnings page of this manual, and all other instructions have been followed accurately. Any abuse of the product or the manner in which it is used will invalidate the warranty.

Returned goods will not be accepted unless re-packaged in its original packaging and accompanied by a relevant and completed returns form. This does not affect your statutory rights.

No rights are given under this warranty to a person acquiring the appliance second-hand or for commercial or communal use.

## COPYRIGHT

---

All material in this instruction manual are copyrighted by DOMU Brands Ltd.

Any unauthorised use may violate worldwide copyright, trademark, and other laws.

### DECLARATION OF CONFORMITY

We:  
DOMU Brands Ltd.  
5th Floor The Tower  
Deva City Office Park  
Manchester  
M3 7BF

Declare under our sole responsibility that the product:  
SKU: 9100023  
Description: VonHaus Random Orbital Polisher Kit.

To which this declaration relates is in conformity with the following directives:

2006/42/EC, 2011/65/EU, 2014/30/EU

Thank you for purchasing the 600W Dual Action Polisher.

VonHaus® is a registered trademark of DOMU Brands Ltd.  
Made in China for DOMU Brands Ltd, M24 2RW.

