

# 1200W DUST COLLECTOR

## Product Instructions

Product No. 3500179.2

**vonhaus**

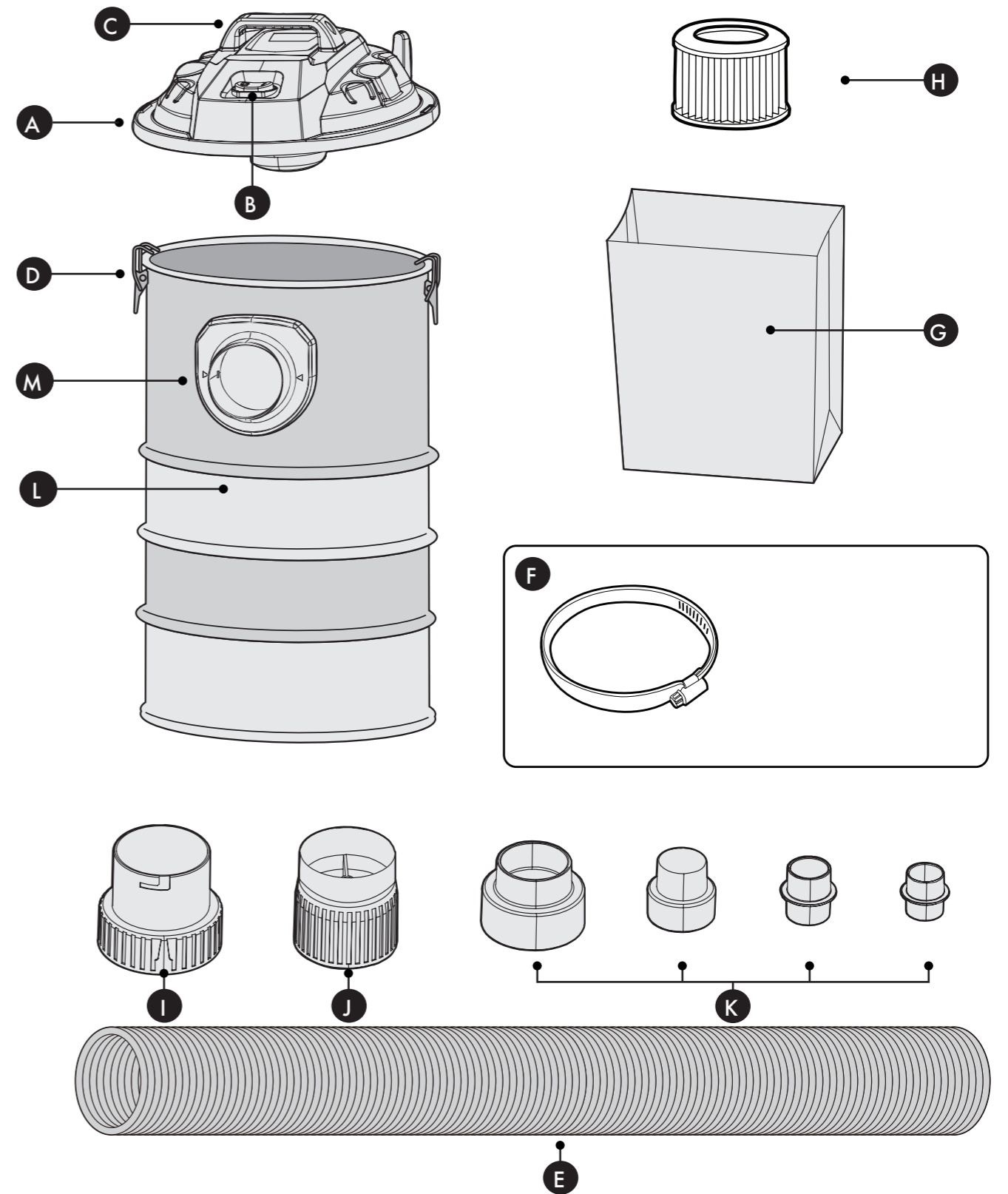
**Let's get started!**

Visit our product hub for useful tips and tricks on getting the most out of your new product.

**SCAN ME**



**Parts & Components**



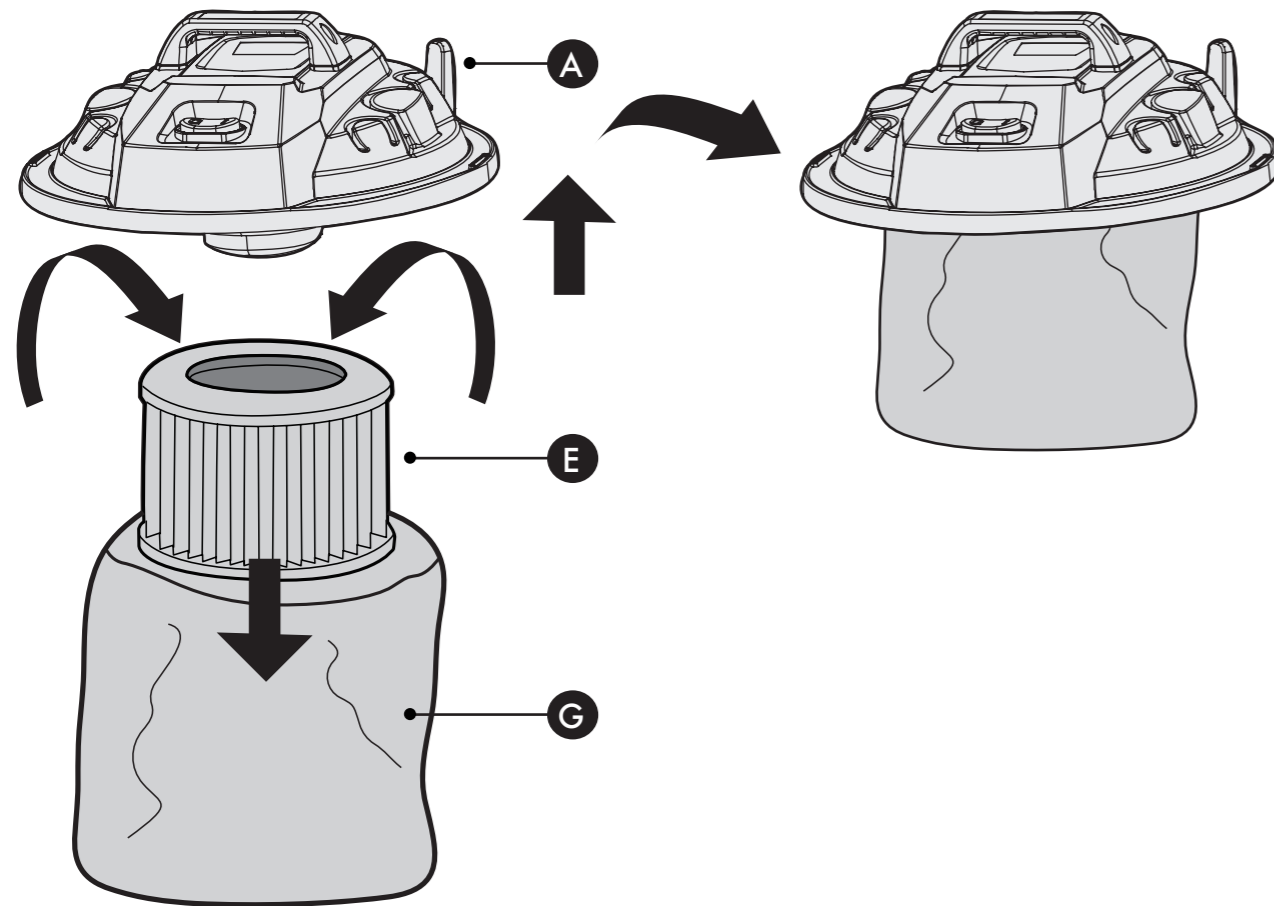
- A. Motor Unit
- B. Power Switch
- C. Handle
- D. Lock Hooks
- E. Suction Hose
- F. Jubilee Clips x1
- G. Paper Dust Bag
- H. Hepa Filter
- I. Hose Connection
- J. Hose Connection 2
- K. Hose Adaptors
- L. Dust Vacuum Tank
- M. Intake Connection

**Need further help?**  
support@vonhaus.com

**See our full range at**  
www.vonhaus.com

# Assembly

1



## Attach the Filter Bag

Put the filter cartridge (H) in the filter bag (G).

Put the filter cartridge with the filter bag in place on the motor unit (A).

Press in the extruding parts in the filter bag (G).

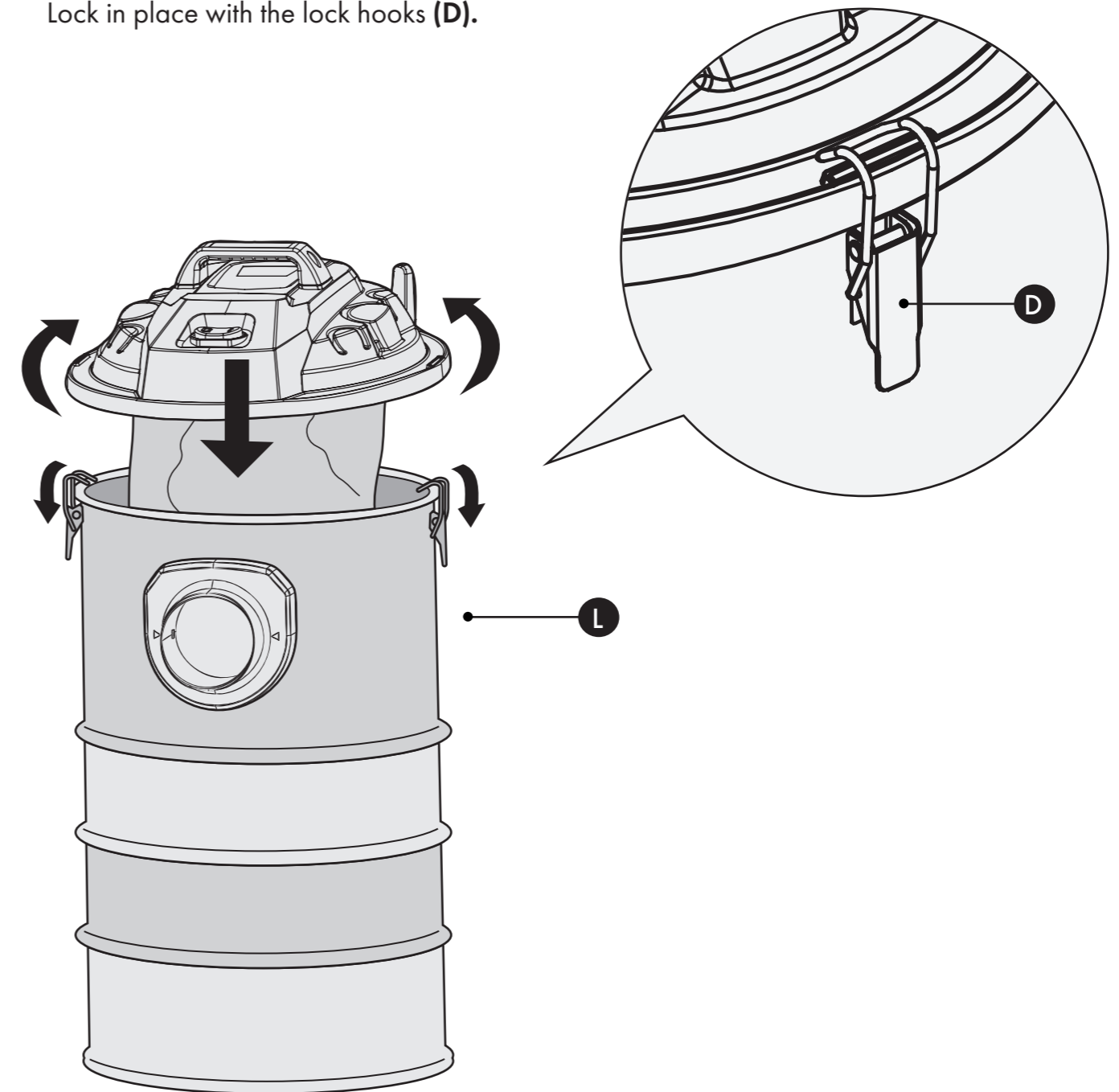
# Assembly

2

## Put the Motor Unit on the Tank

Put the motor unit (A) on the dust vacuum tank (L).

Lock in place with the lock hooks (D).

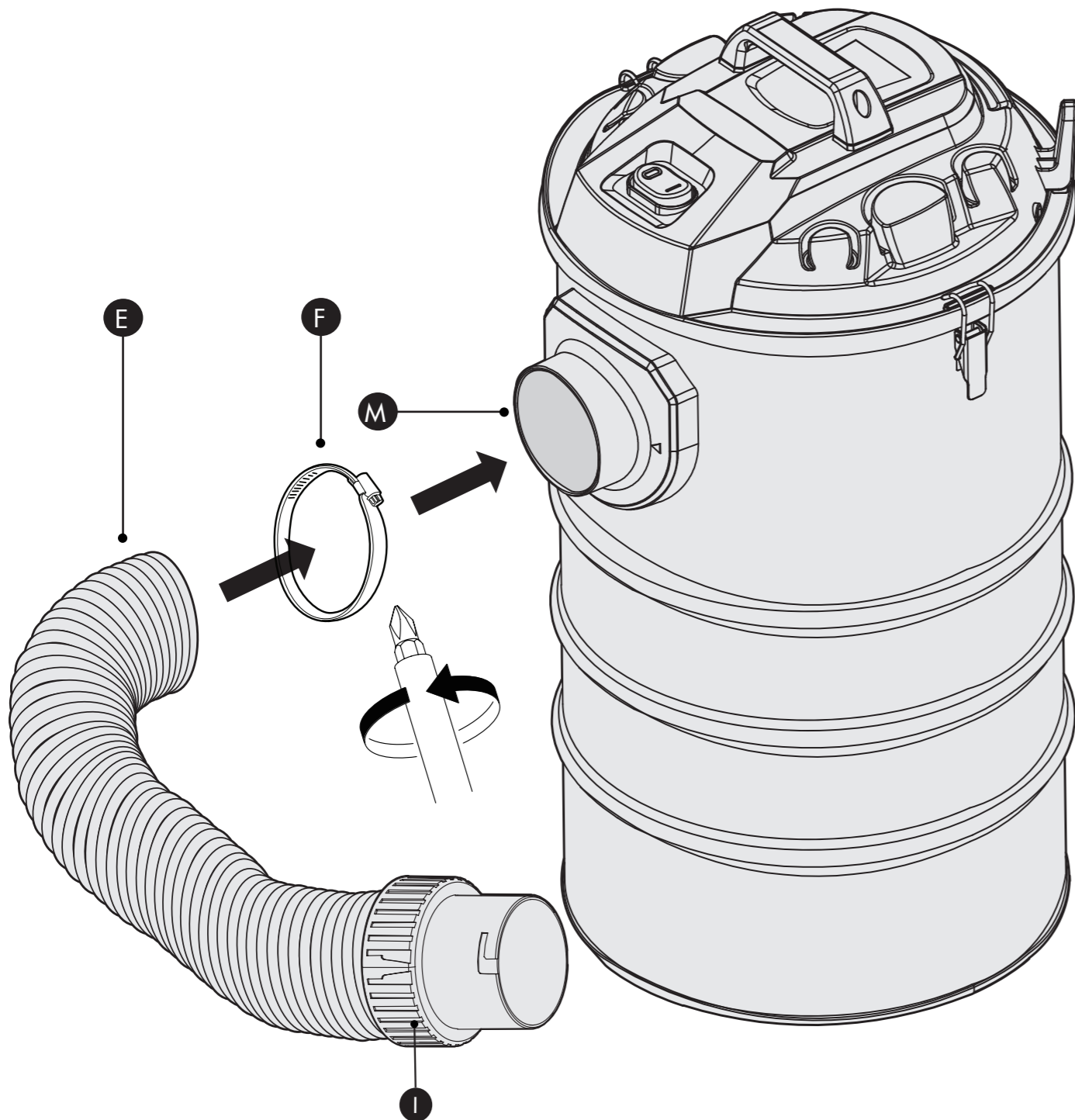


# Assembly

3

## Fit the Suction Hose

Connect the suction hose (E) with a jubilee clip (F) to the intake (M) on the container.

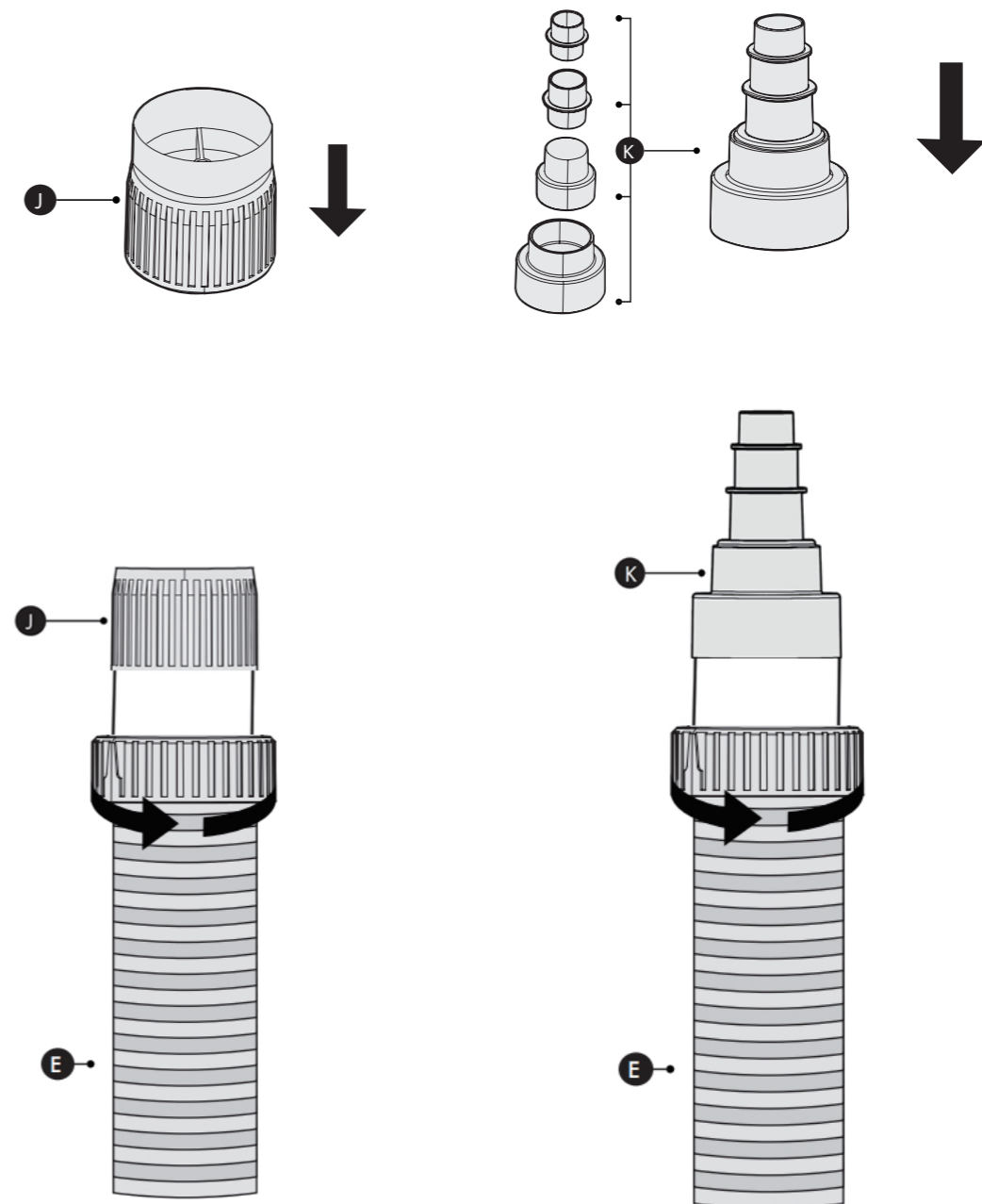


# Assembly

4

## Fasten the Hose Coupling

Fasten the hose coupling on the other end of the hose with the hose connections (J) and the adapters if necessary (K).



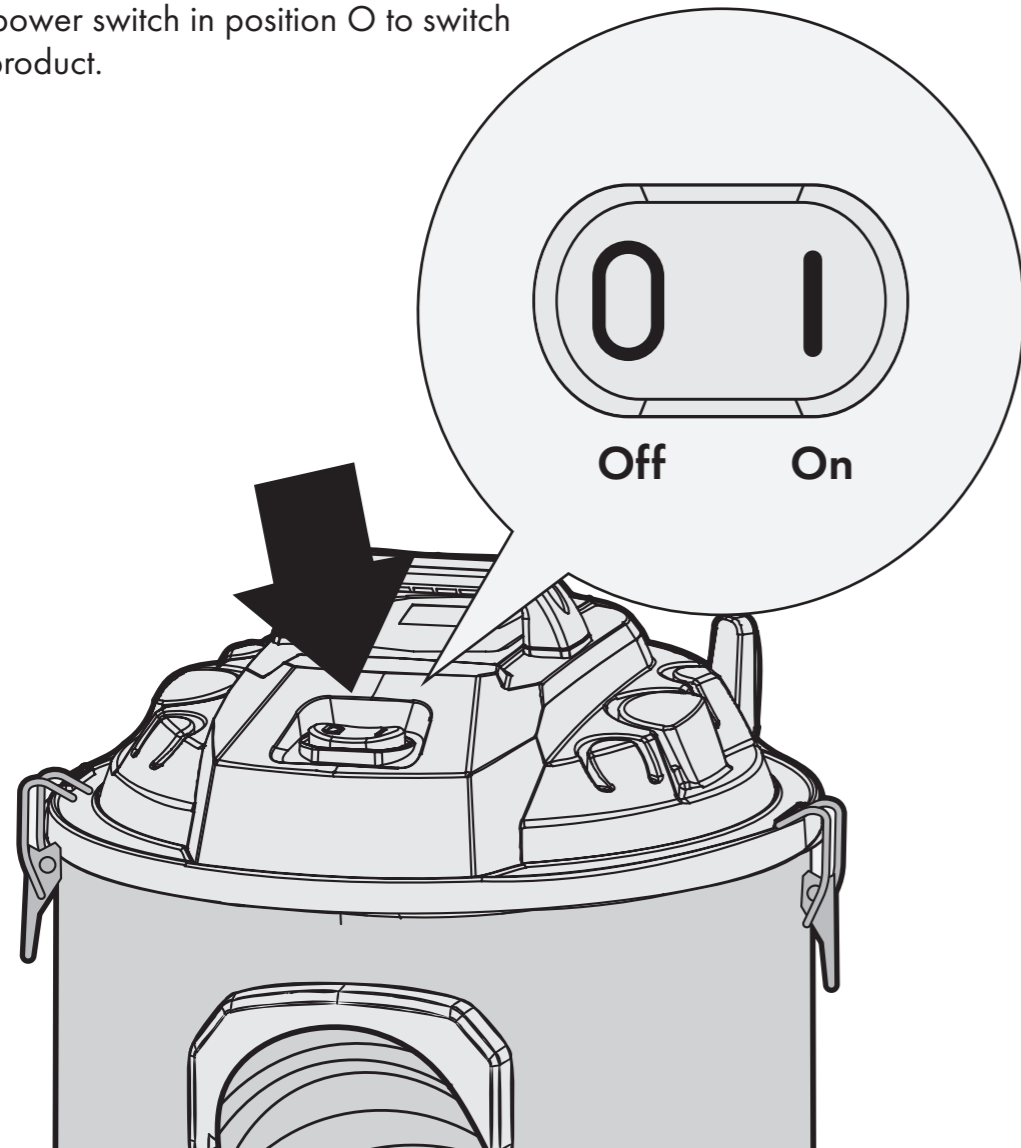
## Assembly

5

### Turn the Machine On

To start the product put the power switch in position I.

Put the power switch in position O to switch off the product.



### WARNING!

Do not start the product until it is fully assembled.

Do not allow children to play with the product or the packaging material – risk of suffocation!



## Information

### Intended Use

This appliance is intended for domestic use only. It is not intended for commercial or industrial environments and is not suitable for outdoor use or on wet surfaces.

This appliance is not intended for use by persons (including children) with reduced physical, sensory or mental capabilities, or lack of experience and knowledge, unless they have been given supervision or instruction concerning use of the appliance by a person responsible for their safety.

Do not allow children to use as a toy. Close attention is necessary when used near children.

### General Precautions

When using any electrical appliance, basic safety precautions should always be followed to reduce the risk of fire, electrical shock and injury to persons, including the following:

If the appliance is not functioning properly, has been dropped, damaged, left outdoors or immersed in liquid, do not use. Contact DOMU Brands Customer Services.

Do not use the appliance if any parts appear to be faulty, missing or damaged.

Ensure all parts are securely attached before using the appliance.

### Cables and Plugs

Check to ensure your electricity supply matches that shown on the rating plate. The appliance must only be used as rated. Preferably, the socket outlet should be protected by a Residual Current Device (RCD).

The use of an extension cable is not recommended.

Do not handle the plug or the appliance with wet hands.

Do not pull the cable around sharp edges or corners.

Keep the cable away from heated surfaces.

Do not leave the appliance unattended when plugged in.

Unplug from outlet when not in use, and before performing user maintenance, connecting or disconnecting attachments or changing accessories.

Do not unplug by pulling on the cable. To unplug, grasp the plug, not the cable.

Hold the plug when rewinding the cable on to the reel. Do not allow the plug to whip while retracting.

Do not use with a damaged cable or plug. If the supply cable is damaged, it must be replaced by a qualified engineer or authorized service agent in order to avoid a hazard.

Take extra care when using the appliance on stairs. ALWAYS work with the vacuum below you, ensuring it is positioned up against the bottom step.

Do not carry out any maintenance or repair work other than that shown in this manual, or as advised by the DOMU Brands Customer Care Helpline.

Use only as described in this manual and with DOMU Brands recommended attachments only.

### Technical Specification

Rated Voltage: 230-240V~

Rated Power: 1200W

Rated Frequency: 50Hz

# Information

## Ear Protection

The declared values for vibration and noise, which have been measured according to a standardised test method, can be used to compare different tools with each other and for a preliminary assessment of exposure. The measurement values have been determined in accordance with EN 60335-2-2:2010+A1.

## Safety

- Operators must be well instructed in the use of these machines.
- This machine is not suitable for collecting up toxic dust.
- This machine is only intended for collecting up dry sawdust.
- This machine must only be used and stored indoors.
- Extension cords must have a minimum wire cross-sectional area of 1.0 square millimeters.
- It is recommended to use a 16A fuse for this product.
- The connection and repair of electrical equipment must only be carried out by an electrician.

## Cleaning

**Important!** Pull out the plug before cleaning. Clean the product after use and check the filter for damage.

- Wipe any dust off the product with a cloth.
- Clean the product with a cloth moistened with water and a mild detergent. Do not use strong detergents or solvent, they can damage the plastic parts. Make sure that no water gets into the product.

## Storage

- Store the product and all accessories in a clean, dry and frost-free place, protected from direct sunlight and out of the reach of children. The best storage temperature is 5 to 30°C.
- Store the product if possible in the original pack.
- Cover the product to protect it from dust and dirt.

## Troubleshooting

### Vacuum Will Not Start

- Remove the plug from the mains and reinsert.
- Check that all components are securely connected.
- Check that the HEPA Filter is securely in place.

### Loss of Suction

- Check the Flexible Hose, Metal Tube, Debris Attachment, Fabric and HEPA Filters and openings for any obstructions and remove.
- Remove and empty the Fabric Filter.
- Clean the Fabric and HEPA Filter (see the "Cleaning the Filters" section on the previous page).
- Check that all components are securely connected.
- Outlet blocked, this can cause the hose to contract. Check for debris and remove. If the smaller hose is being used and there is loss of suction, this is completely normal.

# Usage & Safety



Please read all instructions carefully before use and retain for future reference.



Do not use outdoors.



Not suitable for the use with children of the age of 3 or below.



Do not immerse in water.



Protect your ears



Do not cover.



ALWAYS turn the dust producing machine OFF before turning the dust collector OFF.



Poor Performance? Empty Dust Tank and clean or replace filters.

# Information

---

## Customer Service

If you are having difficulty using this product and require support, please contact [support@vonhaus.com](mailto:support@vonhaus.com)

## Warranty

To register your product and find out if you qualify for a free extended warranty please go to [www.vonhaus.com/warranty](http://www.vonhaus.com/warranty)

Please retain a proof of purchase receipt or statement as proof of the purchase date.

The warranty only applies if the product is used solely in the manner indicated in the warnings page of this manual, and all other instructions have been followed accurately.

Any abuse of the product or the manner in which it is used will invalidate the warranty.

## Returns

Returned goods will not be accepted unless re-packaged in its original packaging and accompanied by a relevant and completed returns form. This does not affect your statutory rights.

No rights are given under this warranty to a person acquiring the appliance second-hand or for commercial or communal use.

## Copyright

All material in this instruction manual are copyrighted by DOMU Brands.

Any unauthorised use may violate worldwide copyright, trademark, and other laws.

## Thank You

Thank you for purchasing your product/appliance.

Should you require assistance with your purchase, please contact us at [support@vonhaus.com](mailto:support@vonhaus.com)

VonHaus is a registered trademark of DOMU Brands Ltd.

Made in China for DOMU Brands Ltd.  
Unit 30, Stakehill Industrial Estate  
Middleton, Manchester, M24 2RW

## EU Authorised Representative

Authorised Representative Service  
77 Camden Street Lower  
Dublin, D02 XE80  
Ireland

## Let's get started!

Visit our product hub for useful tips and tricks on getting the most out of your new product.

**SCAN ME**

