

# 3500180

---



Please read all instructions carefully before use and retain for future reference.



Protect your eyes.



**CAUTION** Do not immerse in water.



Protect your hands.



**CAUTION** Sharp edges.



Protective clothing must be worn.



Wear a dust mask.



Disconnect appliance from mains before cleaning, maintenance or after a thermal cut out event.



Protect your ears.



## EN

Please read all instructions carefully before use and retain for future reference.

**INTENDED USE** Only operate the power tool/machine for its intended purpose and within the parameters specified in this manual.

This power tool/machine is for domestic use only. Do not use outdoors or on wet surfaces.

This power tool/machine is not intended for use by persons with reduced physical, sensory or mental capabilities, or lack of experience and knowledge, unless supervised or given appropriate instruction concerning the product's use by a person responsible for their safety.

**GENERAL PRECAUTION** Do not allow to be used as a toy. Children should be supervised to ensure they do not play with the power tool/machine.

If the power tool/machine is not functioning properly, has been dropped, damaged, left outdoors, or immersed in liquid, do not use, contact DOMU Brands Customer Services.

Do not use the power tool/machine if any parts appear to be faulty, missing or damaged.

Ensure all parts are securely attached before use.

**RISK OF PERSONAL INJURY** Avoid body contact with earthed or grounded surfaces such as pipes, radiators, ranges and refrigerators. There is an increased risk of electric shock if your body is earthed or grounded.

Prevent unintentional starting. Ensure the switch is in the off position before connecting to the power source and/or battery pack, picking up or carrying the tool. Carrying power tools with your finger on the switch, or energising power tools that are switched on, invites accidents.

Do not operate power tools in explosive atmospheres such as in the presence of flammable liquids, gases or dust. Power tools create sparks which may ignite the dust or fumes.

Always wear eye protection. Any power tool can throw foreign objects into your eyes and cause permanent eye damage. Always wear safety goggles (not glasses) that comply with ANSI safety standard Z87.1. Every day glasses have only impact resistant lenses.

Do not expose power tools to rain or wet conditions. Water entering the power tools will increase the risk of electric shock.

Stay alert, watch what you are doing and use common sense when operating a power tool/machine. Do not use a power tool/machine while you are tired or under the influence of drugs, alcohol or medication. A moment of inattention while operating power tool/machine may result in serious personal injury.

Use personal protective equipment. Always wear eye protection. Protective equipment such as dust mask, non-skid safety shoes, hard hat, or hearing protection used for appropriate conditions will reduce personal injuries.

Prevent unintentional starting. Ensure the switch is in the off-position before connecting to power source and/or battery pack, picking up or carrying the tool.

Carrying power tool/machine with your finger on the switch or energizing power tool/machine that have the switch on invites accidents.

Remove any adjusting key or spanner before turning the power tool/machine on. A spanner or a key left attached to a rotating part of the power tool/machine may result in personal injury.

Do not overreach. Keep proper footing and balance at all times. This enables better control of the power tool/

machine in unexpected situations.

Dress appropriately. Do not wear loose clothing or jewellery.

Keep your hair, clothing and gloves away from moving parts. Loose clothes, jewellery or long hair can be caught in moving parts.

If devices are provided for the connection of dust extraction and collection facilities, ensure these are connected and properly used. Use of dust collection can reduce dust-related hazards.

**WORK AREA SAFETY** Keep work area clean and well lit. Cluttered or dark areas invite accidents.

Do not operate power tool/machine in explosive atmospheres, such as in the presence of flammable liquids, gases or dust.

Power tool/machine create sparks which may ignite the dust or fumes.

Keep children and bystanders away while operating a power tool/machine. Distractions can cause you to lose control.

**GENERAL POWER TOOL USE AND CARE** Do not force the power tool/machine. Use the correct power tool/machine for your application. The correct power tool/machine will do the job better and safer at the rate for which it was designed.

Do not use the power tool/machine if the switch does not turn it on and off. Any power tool/machine that cannot be controlled with the switch is dangerous and must be repaired.

Disconnect the plug from the power source and/or the battery pack from the power tool/machine before making any adjustments, changing accessories, or storing power tool/machine tools. Such preventive safety measures reduce the risk of starting the power tool/machine accidentally.

Store idle power tool/machine out of the reach of children and do not allow persons unfamiliar with the power tool/machine or these instructions to operate the power tool/machine.

Power tool/machines are dangerous in the hands of untrained users.

Maintain power tool/machines. Check for misalignment or binding of moving parts, breakage of parts and any other condition that may affect the power tool/machines operation. If damaged, have the power tool/machines repaired before use. Many accidents are caused by poorly maintained power tool/machines.

Keep cutting tools sharp and clean.

Properly maintained cutting tools with sharp cutting edges are less likely to bind and are easier to control.

Use the power tool/machine accessories and tool bits in accordance with these instructions, take into account the working conditions and the work to be performed.

Use of the power tool/machine for operations different from those intended could result in a hazardous situation.

**CLEANING & MAINTENANCE** Never soak or immerse electrical components and or a component that has a plug attached.

Disconnect the plug from the power source before making any adjustments, changing accessories, or storing. Such preventive safety measures reduce the risk of starting the power tool accidentally.

Ensure the motor has fully stopped before cleaning, clearing a blockage, checking, or carrying out any maintenance on the tool.

Maintain your power tool. Check for misalignment or binding of moving parts, breakage of parts and any other condition that may affect the power tool's operation. If damaged, have the power tool repaired by a qualified repair person before use. Many accidents are caused by poorly maintained power tools.

Keep cutting tools sharp and clean. Properly maintained cutting tools with sharp cutting edges are less likely to bind and are easier to control.

Regularly check external nuts and fixings to ensure vibration caused by normal use has not begun to loosen them. Store idle power tools out of reach of children and do not allow persons unfamiliar with the power tool or these instructions to operate the Breaker.

Locate the power tool out of reach of children, in a dry, locked unit.

Make sure that the cord is located so that it will not be stepped on, tripped over, or otherwise subjected to damage or stress.

Remove the plug from the mains socket / battery (where applicable) before carrying out any adjustment or maintenance.

Always store the power tool/machine in a dry place.

If the power cord is damaged, it must be replaced by a qualified service technician.

Keep the ventilation slots and motor housing as free of dirt and dust as possible (where applicable).

Clean the power tool/machine by rubbing it with a clean cloth and blow it clean using low-pressure compressed air is recommended.

Ensure you have all the pieces listed. If you are missing any components, contact our customer services department at

**hello@domu.co.uk (UK/EU)**

**usasupport@domubrand.com (US).** DO NOT proceed with assembly if any components are missing.

#### **ADDITIONAL SCROLL SAW WARNINGS**

Never use damaged or incorrect blades, washers or bolts. Remove any adjusting key or wrench before turning the power tool on. A wrench or a key left attached to any part of the power tool may result in personal injury.

When cutting, always use the Guard supplied.

Do not use saw Blades which are damaged or deformed.

Ensure you use the correct Blades for the Saw.

When changing a saw blade ensure that you wear suitable gloves. Take care that the selection of the saw Blade is suitable for the material to be cut.

Wear suitable personal protective equipment when necessary. This could include:

Hearing protection to reduce the risk of induced hearing loss. Respiratory protection to reduce the risk of inhalation of harmful dust. Always wear gloves when handling saw Blades or rough material.

Saw Blades should be carried in a holder whenever practicable. This means using only your hands to support or guide the workpiece.

Provide adequate support for long or wide workpieces.

Avoid awkward operations and hand positions where a slip could cause your hand to move into the Blade.

Always use the Blade guard. The Blade guard must always be used in every operation.

Connect the saw to a dust collection device when sawing wood. The operator should be informed of the factors that influence exposure to dust e.g. type of material being cut and the importance of local extraction (capture or source) and the proper adjustment hoods/baffles/chutes. Keep hands out of the path of the saw Blade.

Never reach around the saw Blade.

Turn off machine and wait for saw Blade to stop before making any adjustments.

**WARNING** When using this machine, dust particles may be produced. In some instances, depending on the materials you are working with, this dust can be particularly harmful. If you suspect that paint on the surface of material you wish to cut contains lead, seek professional advice. Lead based paints should only be removed by a professional and you should not attempt to remove it yourself. Once the dust has been deposited on surfaces, hand to mouth contact can result in the ingestion of lead. Exposure to even low levels of lead can cause irreversible brain and nervous system damage. The young and unborn children are particularly vulnerable.

You are advised to consider the risks associated with the materials you are working with and to reduce the risk of exposure. As some materials can produce dust that may

be hazardous to your health, we recommend the use of an approved face mask with replaceable filters when using this machine.

be hazardous to your health, we recommend the use of an approved face mask with replaceable filters when using this machine.

#### **TECHNICAL SPECIFICATION**

Rated Voltage 230-240V~

Rated Power 125W

Rated Frequency 50Hz

N<sub>G</sub>: 550-1600/min<sup>-1</sup>

## DECLARATION OF CONFORMITY

We

**DOMU Brands Ltd**  
**5th Floor The Tower**  
**Deva City Office Park**  
**Manchester**  
**M3 7BF**

Declare under our sole responsibility the product:

SKU  
**3500180**

Description

**405mm Scroll Saw with LED Light**

Complies with the essential requirements of the following directives:

**2006/42/EC**  
**2014/30/EU**  
**2011/65/EU**

And the Standards

**EN61029-1:2009+A11, EN 55014-1:2006+A1+A2, EN 55014-2:2015, EN 61000-3-2:2014, EN 61000-3-3:2013**

Authorised Signatory on behalf of DOMU Brands Ltd.

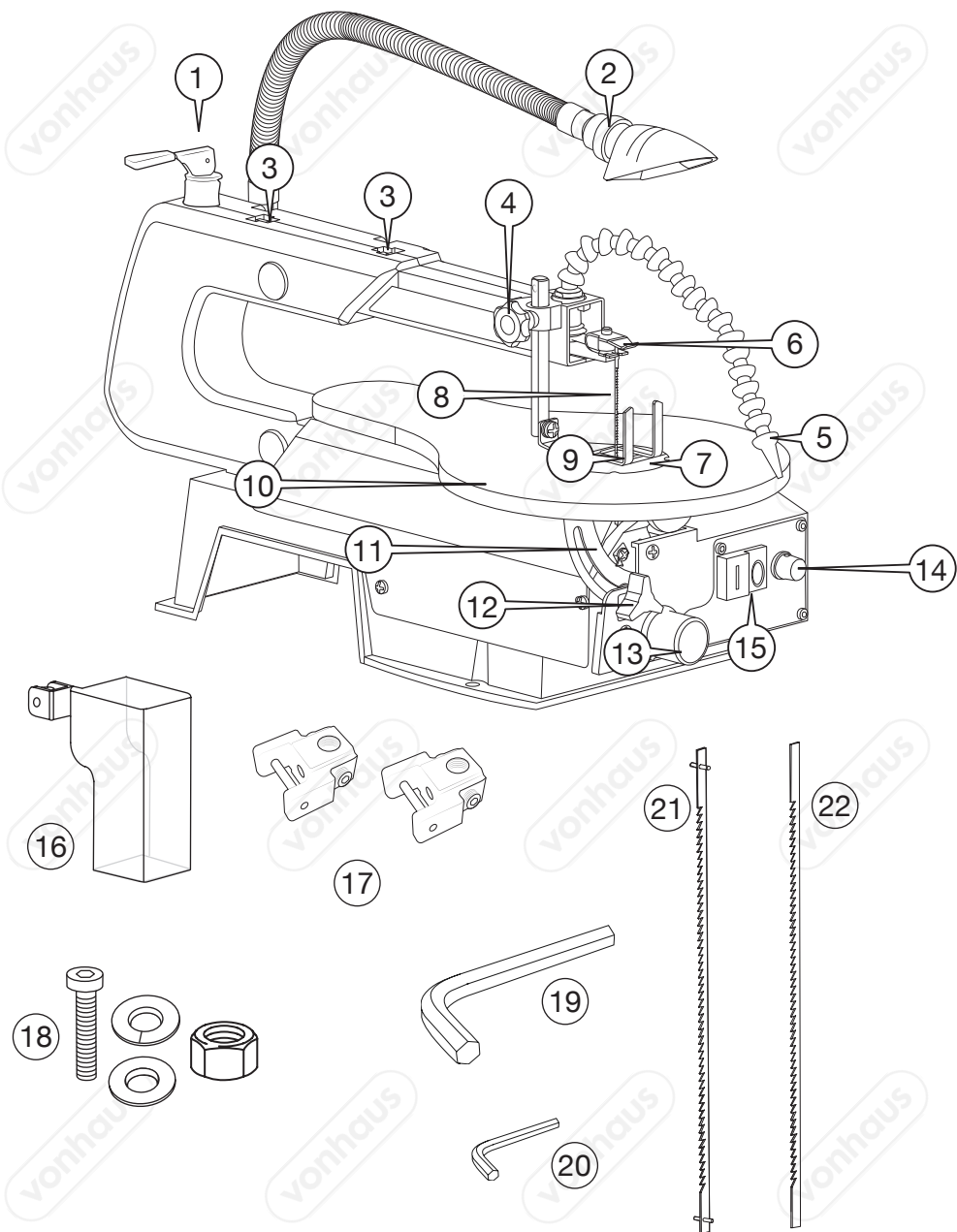


## CONTENT LIST

---

### EN

1. Blade Tension Handle
2. LED Working Light (**LED Bulb Type 12V 36W E14**)
3. Blade Clamp Holders
4. Drop Foot Adjustment Dial
5. Adjustable Saw Dust Blower
6. Saw Arm Lever / Pinless Blade Holder
7. Table Insert
8. Saw Blade
9. Drop Foot
10. Table
11. Bevel Scale
12. Table Bevel Adjustment Locking Screw
13. Dust Extraction Port
14. Speed Selector Dial
15. On/Off Switch
16. Safety Guard
17. Unpinned Blade Adaptors
18. Bolt/Washer/Split Washer/Nut
19. S3 Hex Key
20. S2.5 Hex Key
21. 15T Pinned Blade (**133mm (5")**)
22. 18T Pinless Blade (**133mm (5")**)



## SECURING THE SCROLL SAW

---

**WORKBENCH:** If the Scroll Saw is to be used in a permanent location, it should be fastened securely to a firm supporting surface such as a workbench.

**NOTE:** Mounting Bolts not supplied.

- Place the Scroll Saw in the location you require and mark the 3 holes on the base.
- Drill the holes using a 3/8" Drill Bit.
- Place the Scroll Saw back into the chosen location and align up holes.
- Using the Hex Bolts (Not Supplied) secure the Scroll Saw.

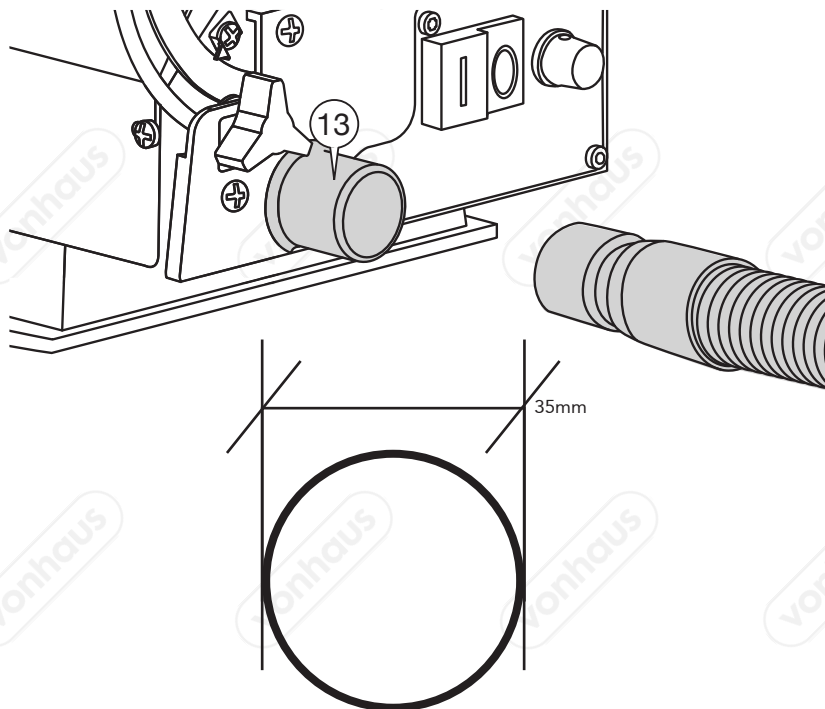
**NOTE:** Bolt length should be 1.1/2" plus the thickness of the bench top.

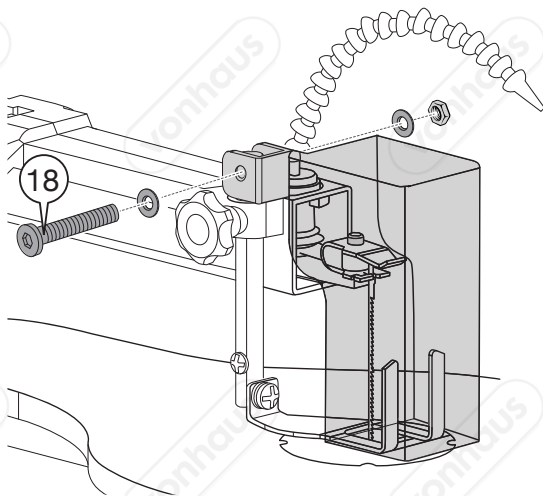
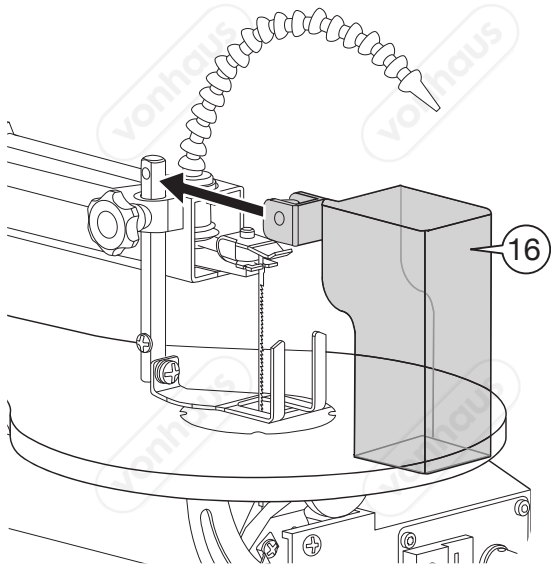
**CLAMPING:** If your Scroll Saw is to be used as a portable tool, it is recommended you fasten it permanently to a mounting board that can easily be clamped to a workbench or other stable surface.

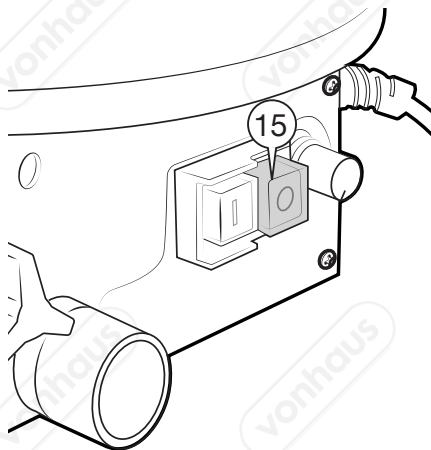
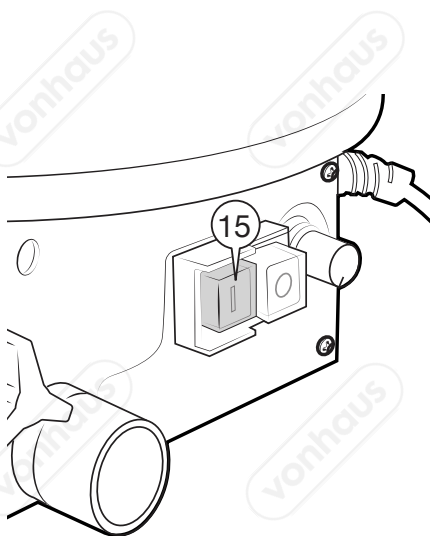
The mounting board should be of sufficient size to avoid tipping while Scroll Saw is in use. Any good grade plywood or chipboard with a 3/4 in. (19 mm) thickness is recommended.

## DUST EXTRACTION

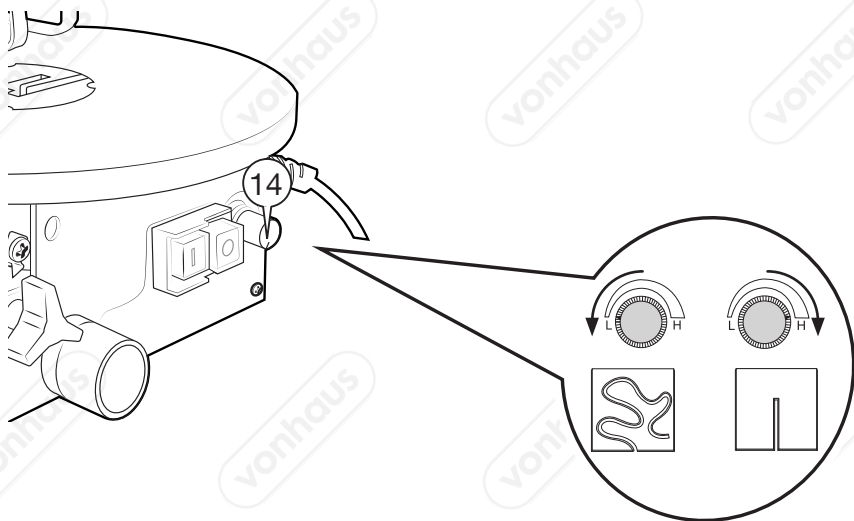
---







SPEED ADJUSTMENT





BLADE SELECTION



Pinned Blade



Pinless Blade

This Scroll Saw uses both Pinned and Non Pinned 133mm (5") length blades, with a wide variety of blade thickness's and widths.

The type of material and intricacies of cutting operations will determine the number of teeth per inch.

Always select the narrowest blades for intricate (tight radius and curves) curve cutting and the widest blades for straight and large curve cutting operations.

The following table represents suggestions for various materials.

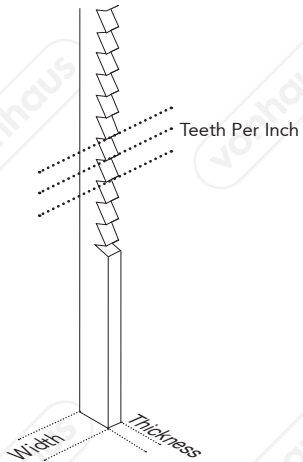
This table is an example, but practice and your own personal preference will be the best selection method.

When choosing a blade, use very fine, narrow blades to scroll cut in thin wood 1/4" thick or less.

Use wider blades for thicker materials but this will reduce the ability to cut tight curves.

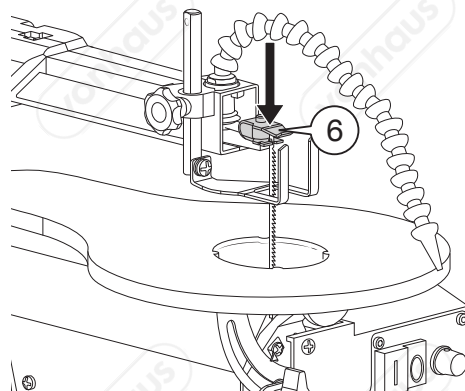
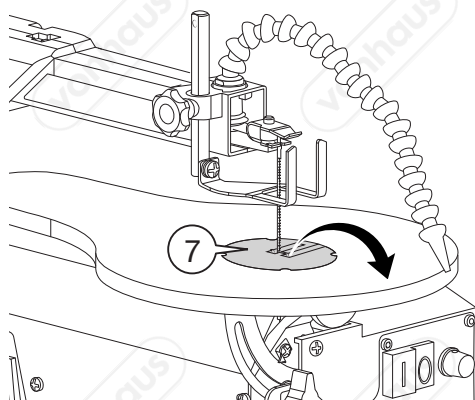
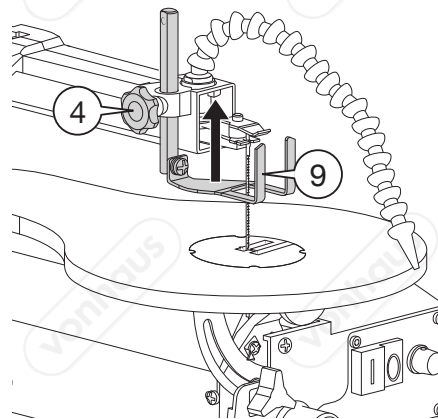
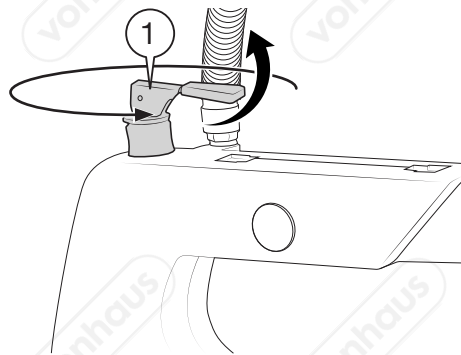
**NOTE:** Thinner blades will have more possibilities for blade deflection when cutting angles are not perpendicular to the table.

**NOTE:** Removing the cover panel gives easy access to the lower blade holder, and will aid in the fitting of blades. Always replace cover panel before operating the saw.

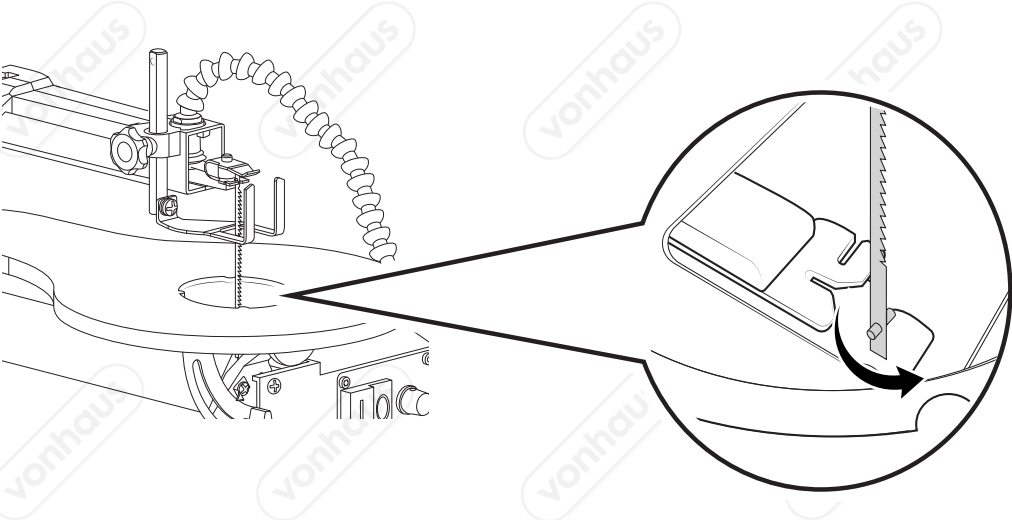
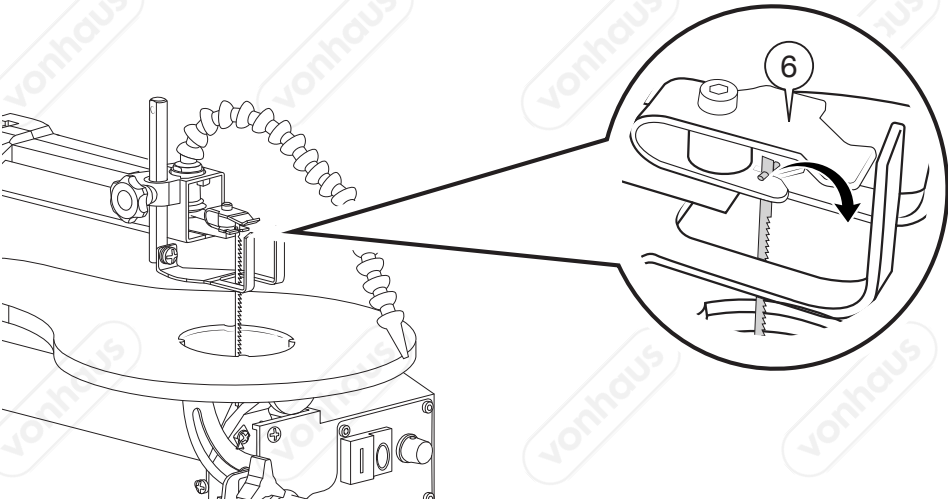


Teeth/Inch	Width	Thickness	Speed	Material
10	2.5mm	0.4mm	1200-1600	Hard & soft woods 6mm up to 51mm. Plastic, paper, felt, etc.
15	2.5mm	0.4mm	600-1200	Wood, plastic, thin cuts 2.4mm up to 13mm thick
20	2.5mm	0.4mm	400-600	Tight radius work 2.4mm up to 13mm thick. Wood, veneer, fibre, plastic, etc.

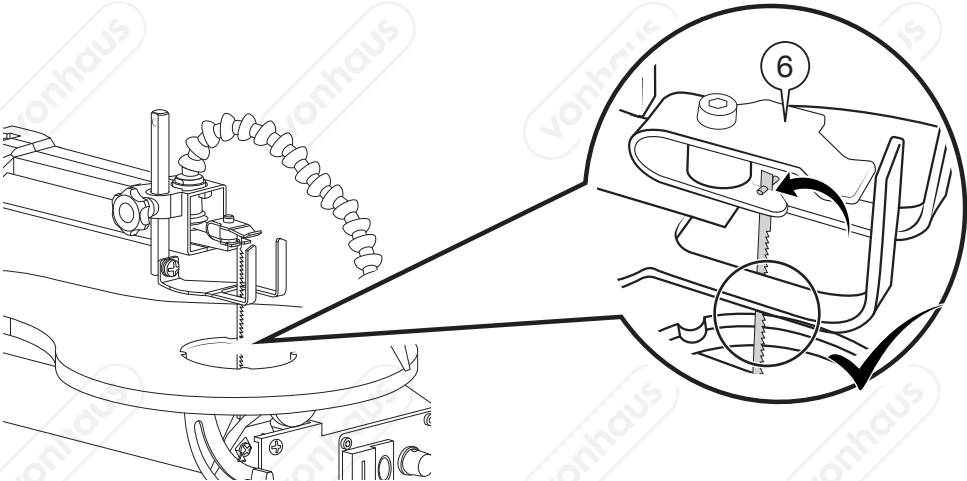
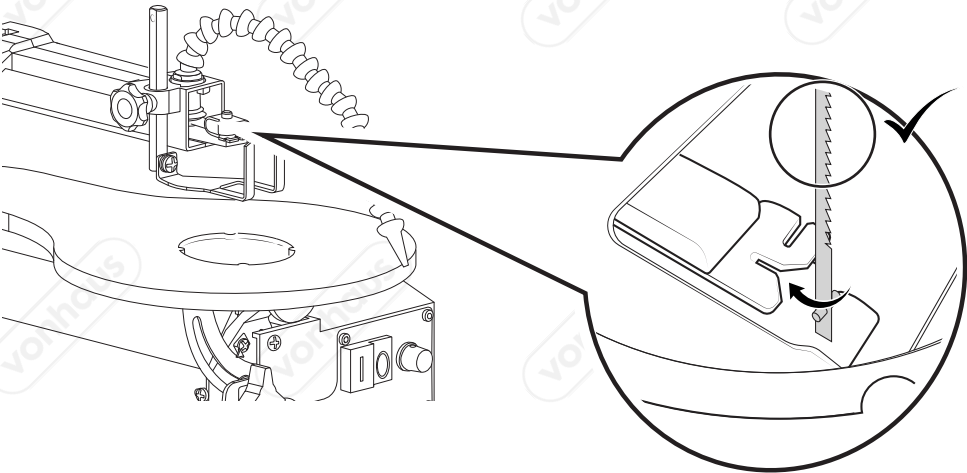
REMOVING THE PINNED BLADE



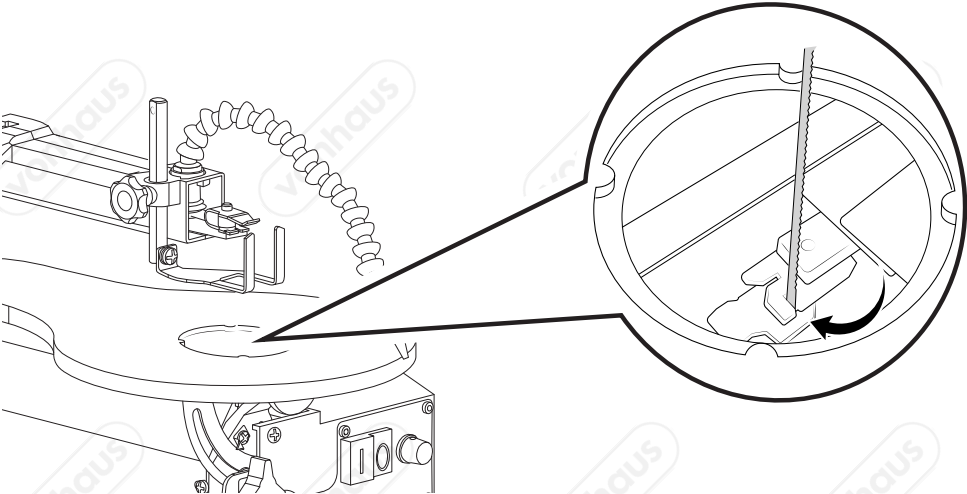
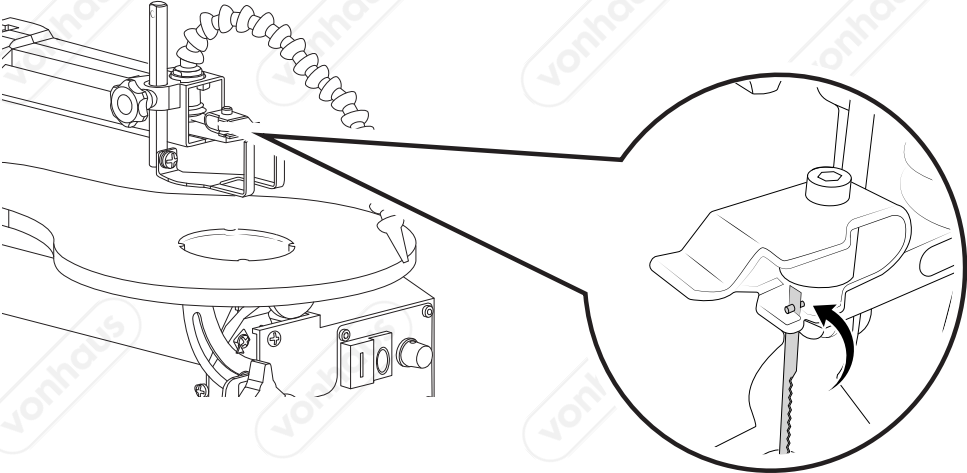
REMOVING THE PINNED BLADE



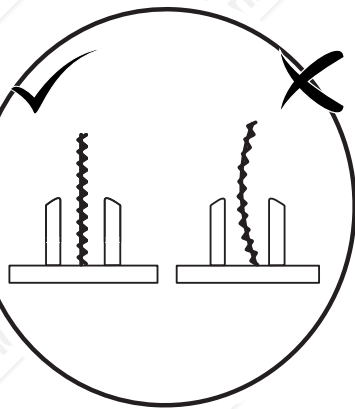
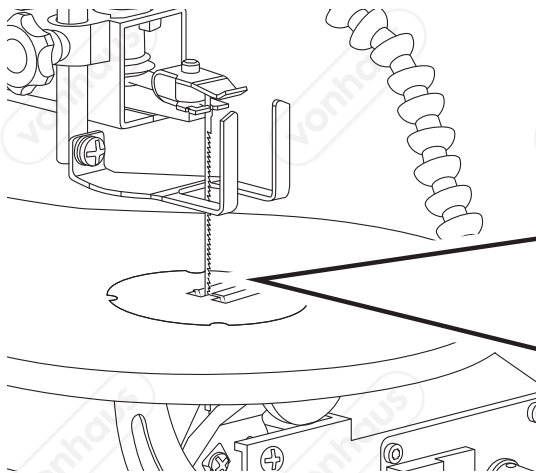
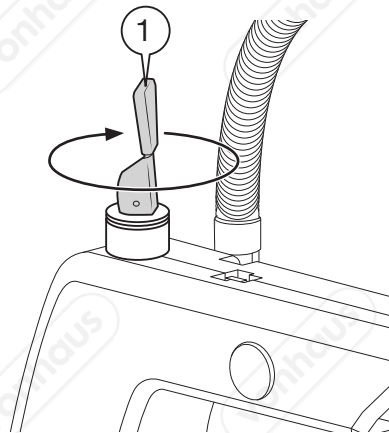
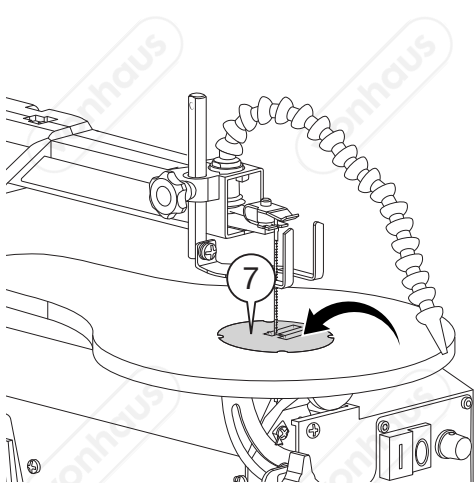
INSTALLING A PINNED BLADE



INSTALLING A PINNED BLADE AT 90°

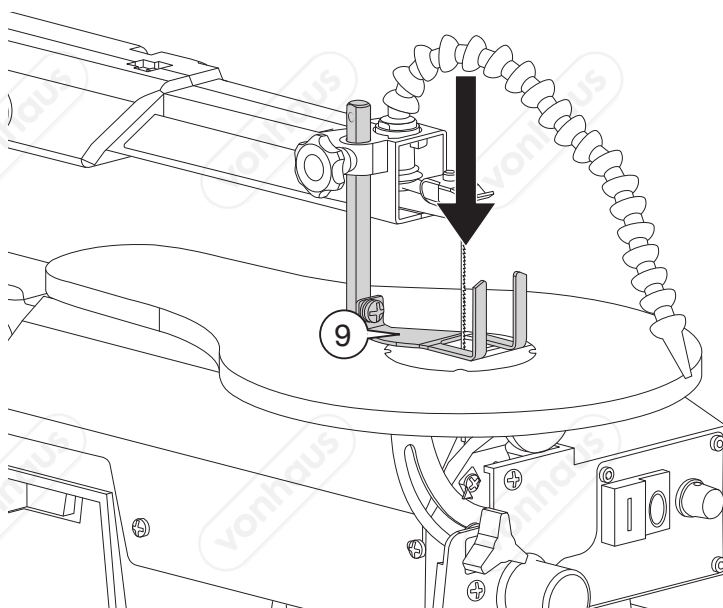
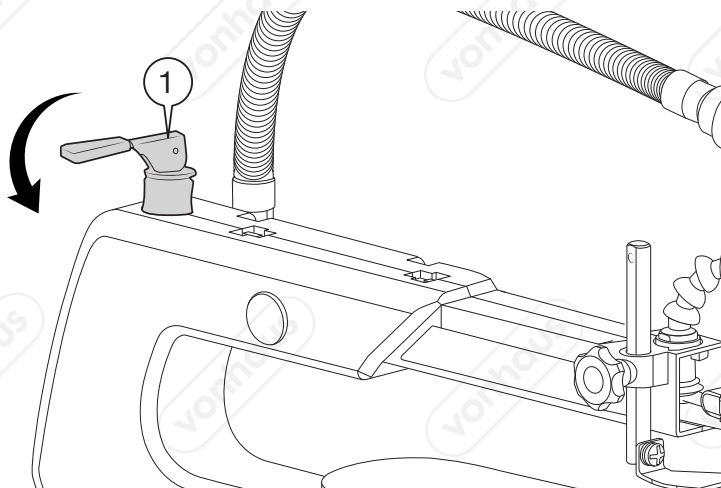


INSTALLING A PINNED BLADE

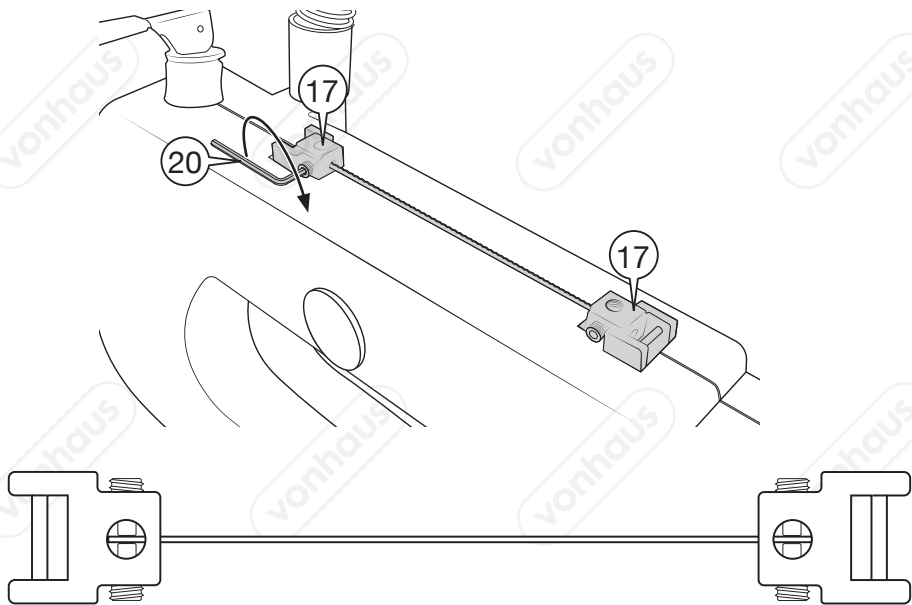


## INSTALLING A PINNED BLADE

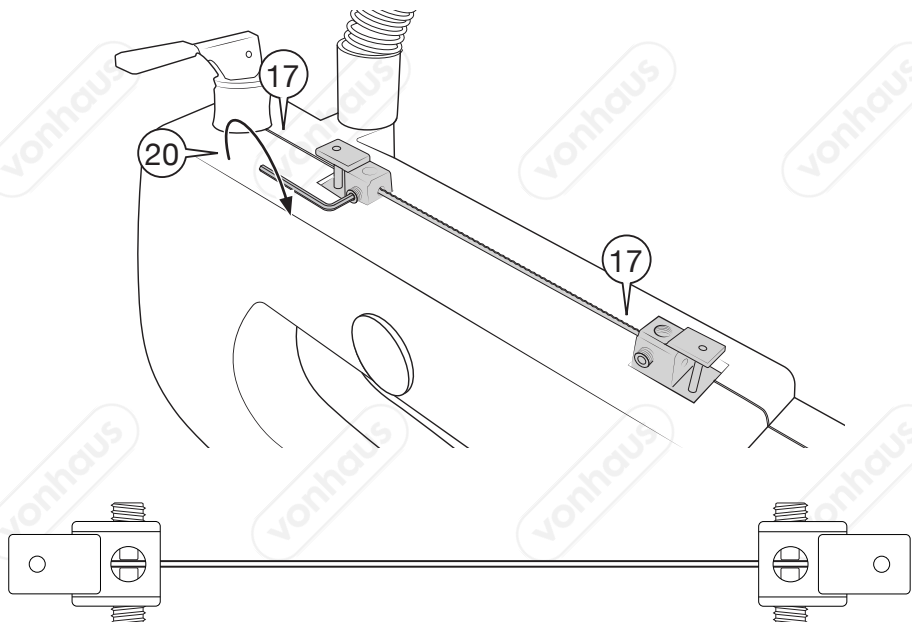
Ensure you keep checking the tension, if handle is too difficult to move into position release the tension slightly.



INSTALLING A NON PINNED BLADE



INSTALLING A NON PINNED BLADE 90°





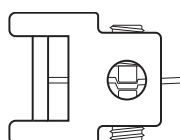
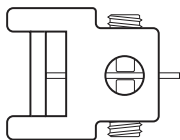
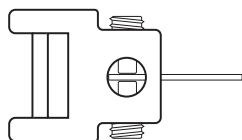
## USING THE BLADE ADAPTORS

---

Ensure the Blade sits central in the Blade Adaptor equally tighten the screws.

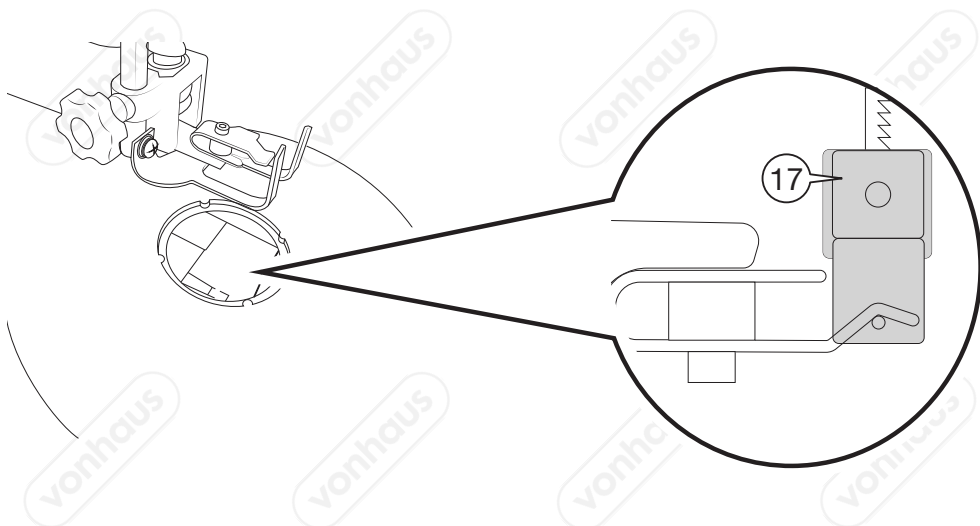
The end of the Blade should not protrude from the main body of the Blade Adaptor.

This would stop the Blade holder of the machine from passing through the gap to secure it in position.

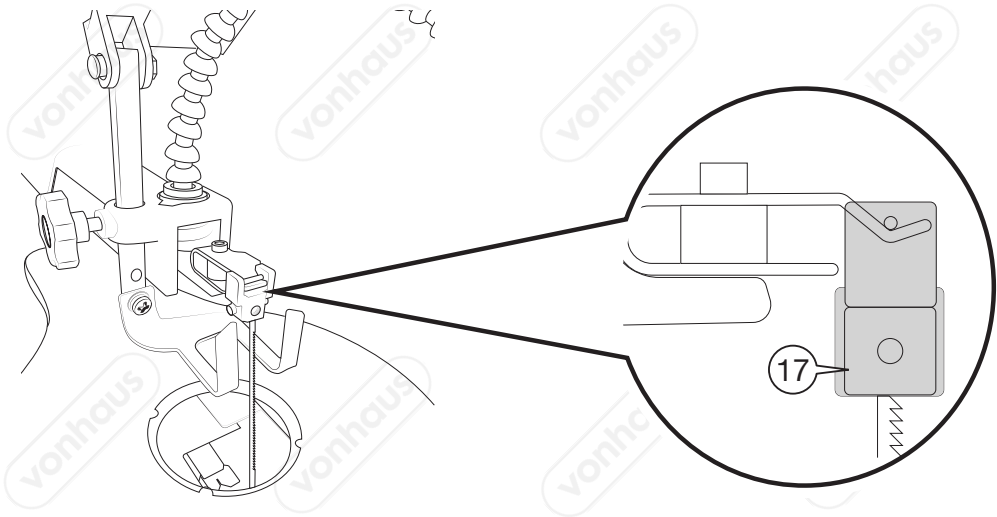


## INSTALLING A NON PINNED BLADE

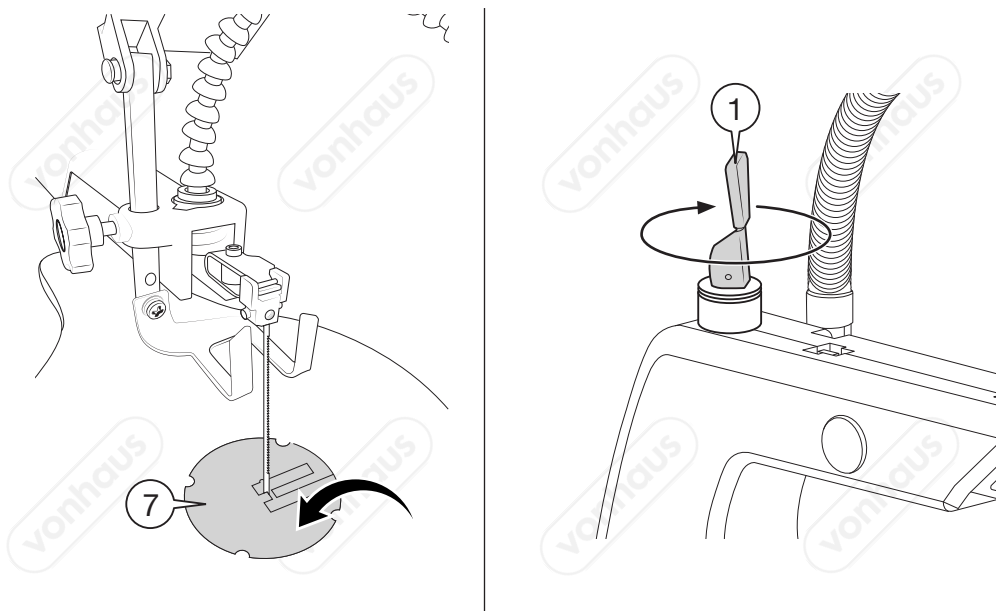
---



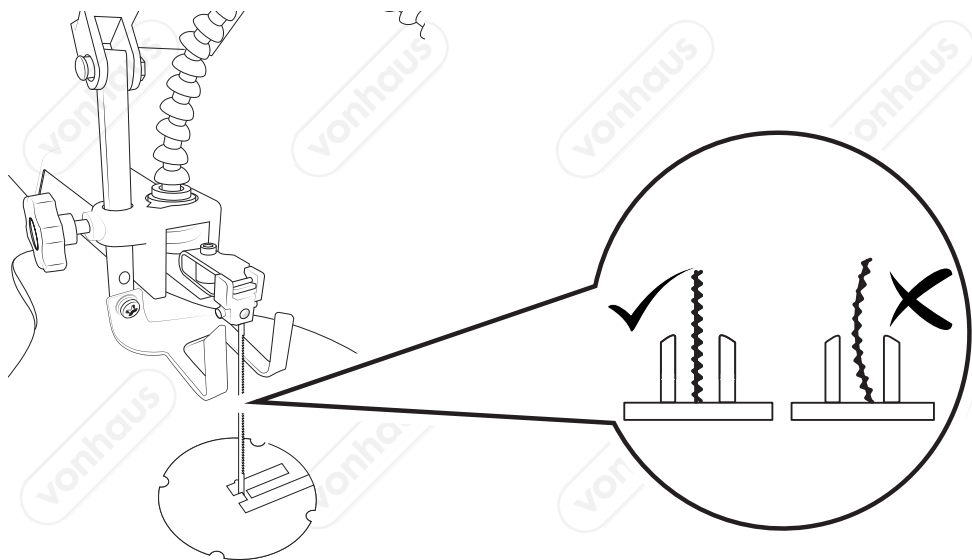
INSTALLING A NON PINNED BLADE



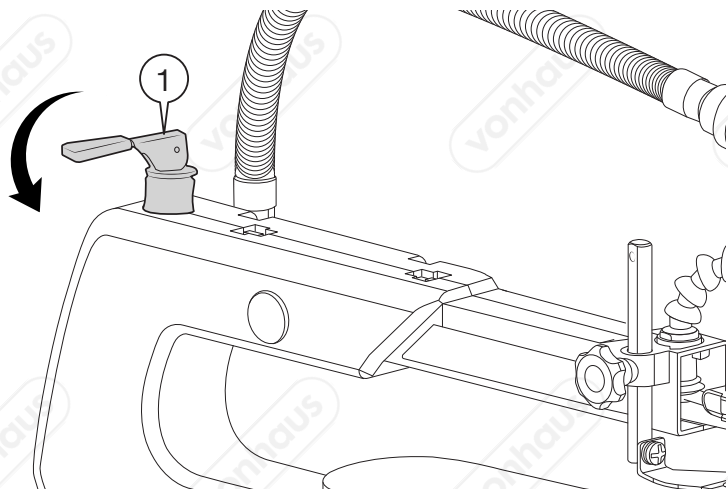
INSTALLING A NON PINNED BLADE



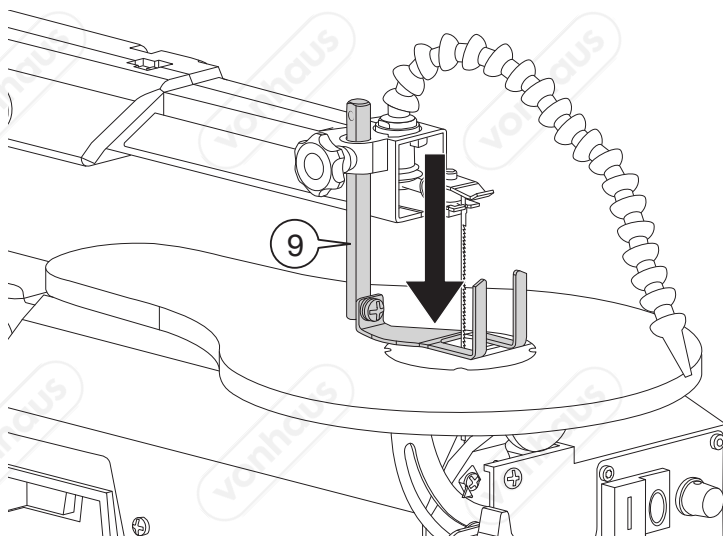
INSTALLING A NON PINNED BLADE



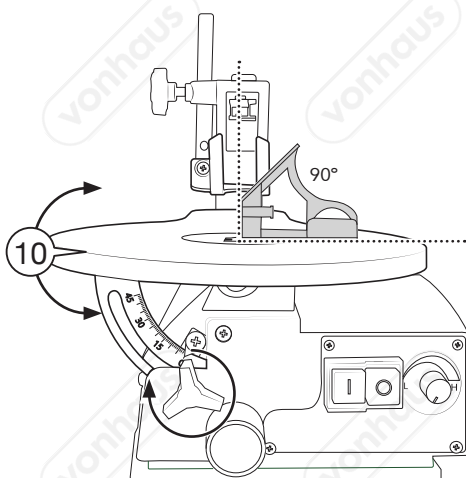
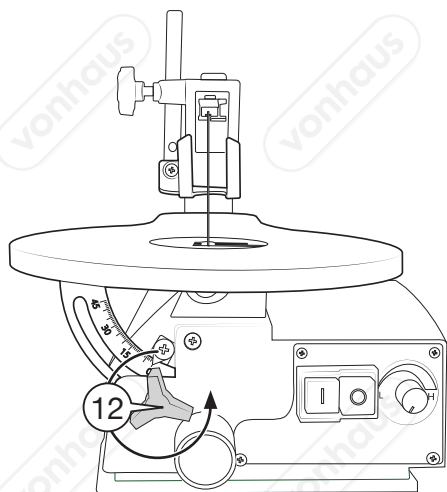
INSTALLING A NON PINNED BLADE



## INSTALLING A NON PINNED BLADE



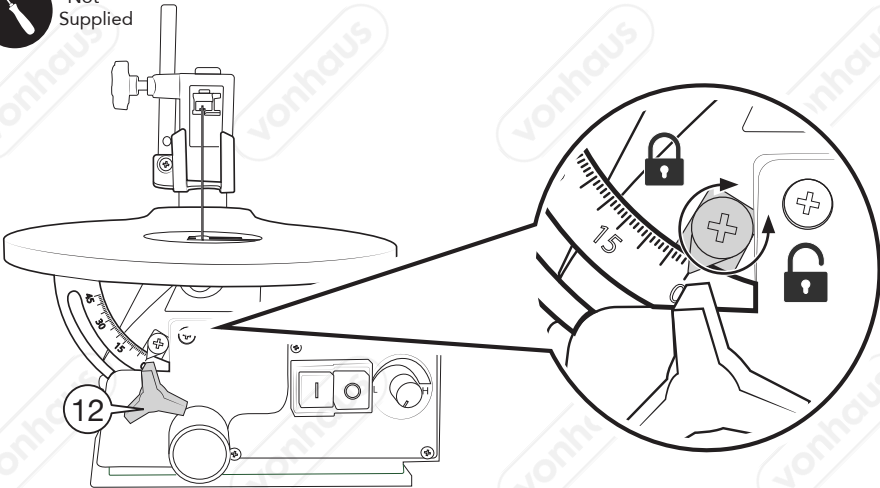
## SETTING THE ANGLE OF THE BLADE TO THE TABLE



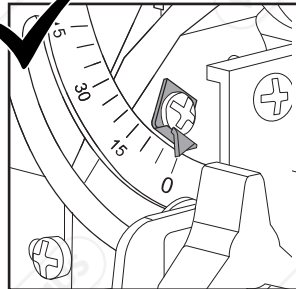
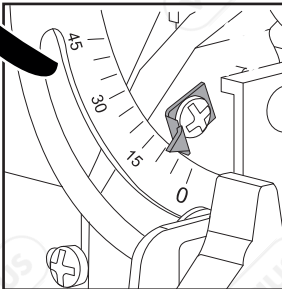
SETTING THE ANGLE OF THE BLADE TO THE TABLE



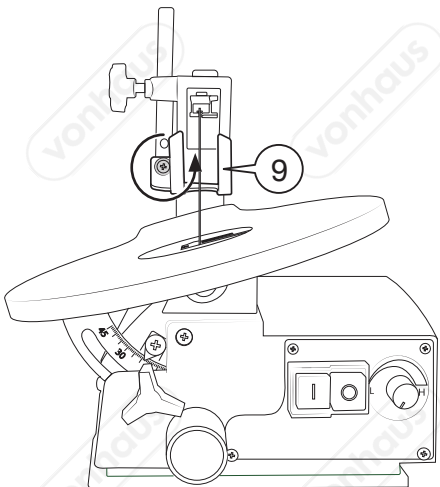
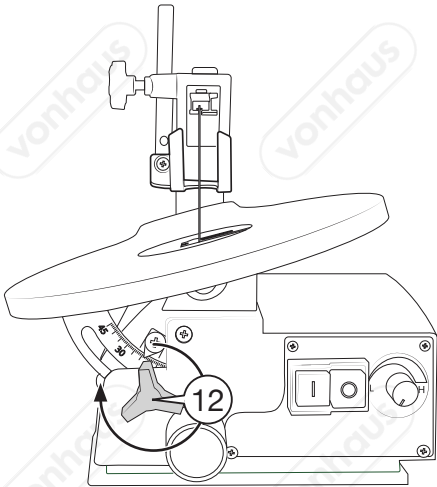
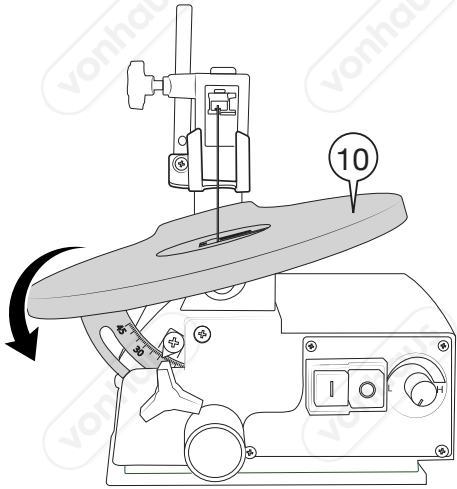
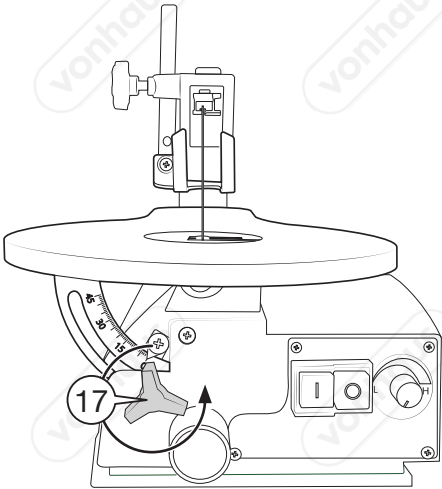
\*Not  
Supplied



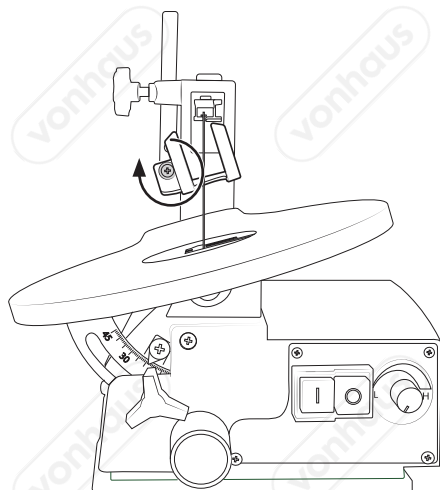
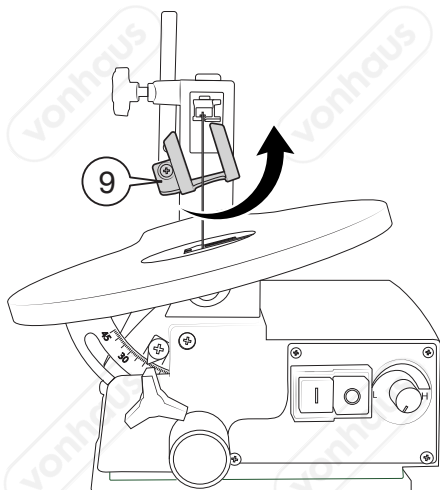
SETTING THE ANGLE OF THE BLADE TO THE TABLE



ADJUSTING THE TABLE & DROP FOOT



## ADJUSTING THE TABLE & DROP FOOT

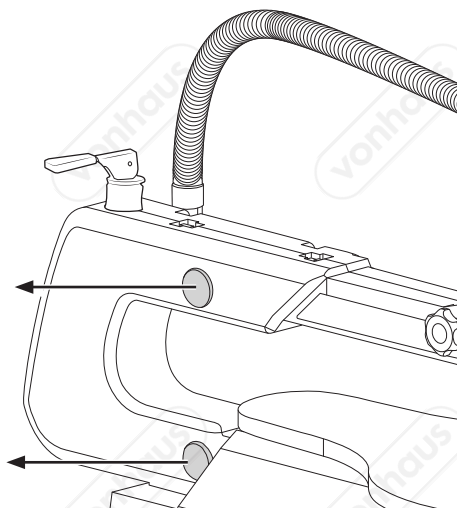


## MAINTENANCE

### SAW ARM BEARINGS

**NOTE:** It is recommended to Lubricate the saw arm bearings after 50 hours of use.

- Turn the saw on to its side
- Remove the Bearing Covers.
- Apply a generous amount of SAE 20 oil to the bearings.
- Let the lubricant oil work in overnight.
- Repeat the procedure the next day on the other-side of the saw.



## MAINTENANCE

---

### CLEANING

Over time a build up of sawdust can accumulate behind the dust port if dust extraction is not used, this should be checked periodically.

**WARNING!** Always ensure that the scroll saw is switch off and disconnect from mains power supply before making any adjustments.

Loosen, but do not remove the screw on the right holding the cover panel in place.

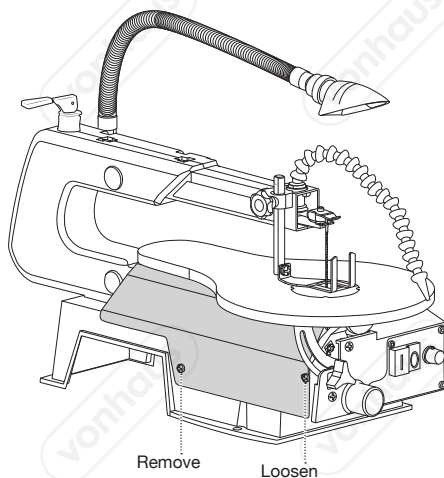
Remove the remaining screw on the left holding the cover panel in place.

The cover panel can now be removed from the body of the saw.

Using a brush, vacuum or compressed air clean away the sawdust and any debris that may have accumulated.

Replace cover panel when finished cleaning.

**NOTE:** Removing the cover panel gives easy access to the lower blade holder, and will aid in the fitting of blades. Always replace cover panel before operating the saw.





vonhaus

vonhaus

vonhaus

vonhaus

vonhaus

vonhaus

vonhaus

vonhaus

vonhaus

vonhaus

vonhaus

vonhaus

vonhaus

vonhaus

vonhaus

vonhaus



## EN

**DISPOSAL INFORMATION** Please recycle where facilities exist. Check with your local authority for recycling advice.

**CUSTOMER SERVICE** If you are having difficulty using this product and require support, please contact  
**hello@domu.co.uk (UK/EU)**  
**usasupport@domubrand.com (US)**

**WARRANTY** To register your product and find out if you qualify for a free extended warranty please go to **www.vonhaus.com/warranty**. Please retain a proof of purchase receipt or statement as proof of the purchase date. The warranty only applies if the product is used solely in the manner indicated in the warnings page of this manual, and all other instructions have been followed accurately. Any abuse of the product or the manner in which it is used will invalidate the warranty. Returned goods will not be accepted unless re-packaged in its original packaging and accompanied by a relevant and completed returns form. This does not affect your statutory rights. No rights are given under this warranty to a person acquiring the appliance second-hand or for commercial or communal use.

**COPYRIGHT** All material in this instruction manual are copyrighted by DOMU Brands. Any unauthorised use may violate worldwide copyright, trademark, and other laws.

## THANK YOU

Thank you for purchasing your product/appliance. Should you require further assistance with your purchase, you can contact us at  
**hello@domu.co.uk (UK/EU)**  
**usasupport@domubrand.com (US)**  
VonHaus is a registered trademark of DOMU Brands Ltd. Made in China for DOMU Brands. M24 2RW.