

zo di questo prodotto e si richiede supporto, contattare support@domu.co.uk

GARANZIA Per registrare il prodotto e capire se hai diritto all'estensione di garanzia, vai su www.vonhaus.com/warranty. Si prega di conservare la ricevuta del pagamento quale prova della data d'acquisto. La garanzia si applica solo se il prodotto viene utilizzato esclusivamente come indicato nella pagina delle Avvertenze del presente manuale e se tutte le altre informazioni vengano accuratamente seguite. Qualsiasi abuso nell'utilizzo di questo prodotto invaliderà la garanzia. I resi non saranno accettati se non riposti nella confezione originale ed accompagnati da un modulo di reso completo. Ciò non pregiudica i propri diritti obbligatori. La presente garanzia non attribuisce alcun diritto a coloro che acquistano prodotti di seconda mano o per fini commerciali o condivisi.

COPYRIGHT Tutto il materiale contenuto nel presente manuale delle istruzioni è protetto da copyright di DOMU Brands. Qualsiasi uso non autorizzato potrebbe violare il copyright a livello mondiale, marchio ed altre leggi.

THANK YOU

Thank you for purchasing your product/appliance. Should you require further assistance with your purchase, you can contact us at support@domu.co.uk. VonHaus is a registered trademark of DOMU Brands Ltd. Made in China for DOMU Brands. M24 2RW. Authorised Representative: Authorised Representative Service, 77 Camden Street Lower, Dublin, D02 XE80, Ireland.

MERCI

Merci d'avoir acheté notre produit/appareil. Si vous aviez besoin d'aide suite à votre achat, vous pouvez nous contacter à support@domu.co.uk. VonHaus est une marque déposée de DOMU Brands Ltd. Fabriqué en Chine pour DOMU Brands. M24 2RW. Authorised Representative: Authorised Representative Service, 77 Camden Street Lower, Dublin, D02 XE80, Ireland.

VIELEN DANK

Vielen Dank, dass Sie das Produkt/Gerät gekauft haben. Sollten Sie weitere Unterstützung benötigen, können Sie uns gerne unter (email) kontaktieren. support@domu.co.uk VonHaus ist eine registrierte Handelsmarke von DOMU Brands Ltd. Hergestellt in China für DOMU Brands. M24 2RW. Authorised Representative: Authorised Representative Service, 77 Camden Street Lower, Dublin, D02 XE80, Ireland.

GRACIAS

Gracias por comprar vuestro producto/aparato. Si requiere asistencia con vuestra compra, podeis contactarnos a support@domu.co.uk. VonHaus es una marca registrada de DOMU Brands Ltd. Hecha en China para DOMU Brands. M24 2RW. Authorised Representative: Authorised Representative Service, 77 Camden Street Lower, Dublin, D02 XE80, Ireland.

GRAZIE

Grazie per aver acquistato il prodotto. Per ulteriore assistenza sul tuo acquisto, puoi contattarci all'indirizzo email support@domu.co.uk. VonHaus è un marchio registrato di DOMU Brands Ltd. Made in Cina per DOMU Brands. M24 2RW. Authorised Representative: Authorised Representative Service, 77 Camden Street Lower, Dublin, D02 XE80, Ireland.

3515261.1



Please read all instructions carefully before use and retain for future reference



Protect your ears



CAUTION Do not immerse in water



Protect your hands



Wear a dust mask



WARNING: When Polishing and Detailing vehicle surfaces, DO NOT EXCEED SPEED SETTING 2. Failure to adhere to this warning may result in damage to your vehicle.



Protect your eyes



EN

Please read all instructions carefully before use and retain for future reference.

INTENDED USE Only operate the power tool/machine for its intended purpose and within the parameters specified in this manual. This power tool/machine is for domestic use only. Do not use outdoors or on wet surfaces. This power tool/machine is not intended for use by persons with reduced physical, sensory or mental capabilities, or lack of experience and knowledge, unless supervised or given appropriate instruction concerning the product's use by a person responsible for their safety.



Protective clothing must be worn

GENERAL PRECAUTION Do not allow to be used as a toy. Children should be supervised to ensure they do not play with the power tool/machine.

If the power tool/machine is not functioning properly, has been dropped, damaged, left outdoors, or immersed in liquid, do not use, contact DOMU Brands Customer Services.

Do not use the power tool/machine if any parts appear to be faulty, missing or damaged. Ensure all parts are securely attached before use.

RISK OF PERSONAL INJURY Avoid body contact with earthed or grounded surfaces such as pipes, radiators, ranges and refrigerators. There is an increased risk of electric shock if your body is earthed or grounded. Prevent unintentional starting. Ensure the switch is in the off position before connecting to the power source and/or battery pack, picking up or carrying the tool. Carrying power tools with your finger on the switch, or energising power tools that are switched on, invites accidents.

Do not operate power tools in explosive atmospheres such as in the presence of flammable liquids, gases or dust. Power tools create sparks which may ignite the dust or fumes.

Always wear eye protection. Any power tool can throw foreign objects into your eyes and cause permanent eye damage. Always wear safety goggles (not glasses) that comply with ANSI safety standard Z87.1. Every day glasses have only impact resistant lenses.

Do not expose power tools to rain or wet conditions. Water entering the power tools will increase the risk of electric shock.

Stay alert, watch what you are doing and use common sense when operating a power tool/machine. Do not use a power tool/machine while you are tired or under the influence of drugs, alcohol or medication. A moment of inattention while operating power tool/machine may result in serious personal injury.

Use personal protective equipment. Always wear eye protection. Protective equipment such as dust mask, non-skid safety shoes, hard hat, or hearing protection used for appropriate conditions will reduce personal injuries.

Prevent unintentional starting. Ensure the switch is in the off-position before connecting to power source and/or battery pack, picking up or carrying the tool.

Carrying power tool/machine with your finger on the switch or energizing power tool/machine that have the switch on invites accidents.

Remove any adjusting key or spanner before turning the power tool/machine on. A spanner or a key left attached to a rotating part of the power tool/machine may result in personal injury.

Do not overreach. Keep proper footing and balance at all times. This enables better control of the power tool/machine in unexpected situations.

Dress appropriately. Do not wear loose clothing or jewellery.

Keep your hair, clothing and gloves away from moving parts. Loose clothes, jewellery or long hair can be caught in moving parts.

If devices are provided for the connection of dust extraction and collection facilities, ensure these are connected and properly used. Use of dust collection can reduce dust-related hazards.

WORK AREA SAFETY Keep work area clean and well lit. Cluttered or dark areas invite accidents.

Do not operate power tool/machine in explosive atmospheres, such as in the presence of flammable liquids, gases or dust.

Power tool/machine create sparks which may ignite the dust or fumes.

Keep children and bystanders away while operating a power tool/machine. Distractions can cause you to lose control.

GENERAL POWER TOOL USE AND CARE Do not force the power tool/machine. Use the correct power tool/machine for your application. The correct power tool/machine will do the job better and safer at the rate for which it was designed.

Do not use the power tool/machine if the switch does not turn it on and off. Any power tool/machine that cannot be controlled with the switch is dangerous and must be repaired.

Disconnect the plug from the power source and/or the battery pack from the power tool/machine before making any adjustments, changing accessories, or storing power tool/machine tools. Such preventive safety measures reduce the risk of starting the power tool/machine accidentally.

Store idle power tool/machine out of the reach of children and do not allow persons unfamiliar with the power tool/machine or these instructions to operate the power tool/machine.

Power tool/machines are dangerous in the hands of untrained users.

Maintain power tool/machines. Check for misalignment or binding of moving parts, breakage of parts and any other condition that may affect the power tool/machines operation. If damaged, have the power tool/machines repaired before use. Many accidents are caused by poorly maintained power tool/machines.

Keep cutting tools sharp and clean. Properly maintained cutting tools with sharp cutting edges are less likely to bind and are easier to control.

Use the power tool/machine accessories and tool bits in accordance with these instructions, take into account the working conditions and the work to be performed.

Use of the power tool/machine for operations different from those intended could result in a hazardous situation.

CLEANING & MAINTENANCE Never soak or immerse electrical components and or a component that has a plug attached.

Disconnect the plug from the power source before making any adjustments, changing accessories, or storing. Such preventive safety measures reduce the risk of starting the power tool accidentally.

Ensure the motor has fully stopped before cleaning, clearing a blockage, checking, or carrying out any maintenance on the tool.

Maintain your power tool. Check for misalignment or binding of moving parts, breakage of parts and any other condition that may affect the power tool's operation. If damaged, have the power tool repaired by a qualified repair person before use. Many accidents are caused by poorly maintained power tools.

Keep cutting tools sharp and clean. Properly maintained cutting tools with sharp cutting edges are less likely to bind and are easier to control.

Regularly check external nuts and fixings to ensure vibration caused by normal use has not begun to loosen them. Store idle power tools out of reach of children and do not allow persons unfamiliar with the power tool or these instructions to operate the Breaker.

Locate the power tool out of reach of children, in a dry, locked unit.

Make sure that the cord is located so that it will not be stepped on, tripped over, or otherwise subjected to damage or stress.

Remove the plug from the mains socket / battery (where applicable) before carrying out any adjustment or maintenance.

Always store the power tool/machine in a dry place. If the power cord is damaged, it must be replaced by a qualified service technician.

Keep the ventilation slots and motor housing as free of dirt and dust as possible (where applicable).

Clean the power tool/machine by rubbing it with a clean cloth and blow it clean using low-pressure compressed air is recommended.



EN

DISPOSAL INFORMATION Please recycle where facilities exist. Check with your local authority for recycling advice.

CUSTOMER SERVICE If you are having difficulty using this product and require support, please contact support@domu.co.uk

WARRANTY To register your product and find out if you qualify for a free extended warranty please go to www.vonhaus.com/warranty. Please retain a proof of purchase receipt or statement as proof of the purchase date. The warranty only applies if the product is used solely in the manner indicated in the warnings page of this manual, and all other instructions have been followed accurately. Any abuse of the product or the manner in which it is used will invalidate the warranty. Returned goods will not be accepted unless re-packaged in its original packaging and accompanied by a relevant and completed returns form. This does not affect your statutory rights. No rights are given under this warranty to a person acquiring the appliance second-hand or for commercial or communal use.

COPYRIGHT All material in this instruction manual are copyrighted by DOMU Brands. Any unauthorised use may violate worldwide copyright, trademark, and other laws.

FR

INFORMATIONS RELATIVES AU RECYCLAGE

Veuillez recycler là où il existe des installations adéquates. Vérifiez auprès de vos autorités locales pour obtenir des conseils sur le recyclage.

SERVICE CLIENT Si vous rencontrez des difficultés pour utiliser ce produit et avez besoin d'assistance, veuillez contacter support@domu.co.uk

GARANTIE Pour enregistrer votre produit et découvrir si vous vous qualifiez pour une extension gratuite de garantie, rendez-vous sur www.vonhaus.com/warranty. Conservez une preuve d'achat, reçu ou attestation, pour prouver la date de l'achat. La garantie ne s'applique que si le produit a été utilisé de la manière indiquée dans la section de la page des avertissements de ce manuel et que toutes les instructions ont été suivies de manière précise. Tous les abus réalisés sur le produit, dans la manière dont il a été utilisé, rendront la garantie caduque. Les marchandises renvoyées ne seront acceptées que si elles sont remballées dans leur emballage d'origine et accompagnées d'un formulaire de retour adéquat et rempli. Ceci n'affecte pas vos droits statutaires. Cette garantie n'accorde aucun droit à une personne obtenant le produit de seconde main ou à des fins d'utilisation commerciale ou communale.

DROITS D'AUTEUR Toutes les informations de ce manuel d'utilisation sont protégées par droit d'auteur par DOMU Brands. Toute utilisation non autorisée pourrait enfreindre les lois mondiales de droit d'auteur, de marque déposée ainsi que d'autres lois.

DE

ENTSORGUNG Bitte entsorgen Sie das Produkt an geeigneten Entsorgungsstellen. Fragen Sie bei Ihrer Gemeinde nach.

KUNDENSERVICE Wenn Sie Schwierigkeiten mit diesem Produkt haben und Unterstützung benötigen, wenden Sie sich bitte an support@domu.co.uk

GARANTIE Um Ihr Produkt zu registrieren und zu erfahren, ob eine kostenlose verlängerte Garantie möglich ist, gehen Sie bitte auf www.vonhaus.com/warranty. Bitte behalten Sie eine Rechnung oder den Kassenzettel als Nachweis des Einkaufsdatums auf. Die Garantie gilt nur, wenn das Produkt nur wie in dieser Anleitung beschrieben verwendet wurde und wenn alle Anweisungen befolgt wurden. Jeglicher Missbrauch des Produkts oder der Art und Weise, in der es verwendet wird, macht die Garantie ungültig. Zurückgegebene Artikel werden nur akzeptiert, wenn sie sich in der Originalverpackung befinden und wenn ein relevantes und vollständig ausgefülltes Rücksendeformular enthalten ist. Dies betrifft nicht Ihre gesetzlichen Ansprüche. Für Artikel, die gebraucht erworben wurden, oder die kommerzielle oder gemeinschaftlich genutzt werden, entstehen keinerlei Ansprüche auf Garantie.

COPYRIGHT Alle Materialien in dieser Anleitung stehen unter Copyright von DOMU Brands Ltd. Jede unautorisierte Verwendung kann das weltweite Copyright, die Handelsmarke und andere Gesetze verletzen.

ES

INFORMACION DE DESECHO Por favor, recíclalo en las instalaciones correspondientes. Consulta con vuestra autoridad local para obtener consejos de reciclaje.

SERVICIO AL CLIENTE Si tiene dificultades para utilizar este producto y necesita asistencia, contacte con support@domu.co.uk

GARANTÍA Para registrar nuestro producto y averiguar si califica para una garantía extendida gratuita, vaya a www.vonhaus.com/warranty. Conservad un comprobante de recibo de compra o extracto como prueba de la fecha de compra. La garantía solo se aplica si el producto se utiliza únicamente de la manera indicada en la página de advertencias de este manual, y todas las demás instrucciones se han seguido con precisión. Cualquier abuso del producto o la manera en que se use invalidará la garantía. Los productos devueltos no se aceptarán a menos que se vuelvan a empaquetar en su embalaje original y acompañados por un formulario de devolución completo y pertinente. Esto no afecta sus derechos legales. No se otorgan derechos bajo esta garantía a una persona que adquiere el aparato de segunda mano o para uso comercial o comunitario.

DERECHOS DE AUTOR Todo el material en este manual de instrucciones está protegido por DOMU Brands. Cualquier uso no autorizado puede violar los derechos de autor, marcas comerciales y otras leyes en todo el mundo.

IT

INFORMAZIONI SULLO SMALTIMENTO Si prega di riciclare nelle apposite strutture. Chiedere una consulenza alle autorità competenti per il riciclo.

SERVIZIO CLIENTI Se si riscontrano difficoltà nell'utiliz-

POLISHING TIPS

Ensure that the area to be polished is clean and dry.
Choose only polishing compounds that are compatible with the material to be polished, and with the method of application. Read and understand all information supplied with your polishing compound before use.
If using polishing sponges, apply polishing compound evenly to the polishing sponge and place the sponge against the work surface.
Hold the machine securely, using both hands, by the handles provided.
The polishing sponge should make only light contact with the work surface.
Switch on the machine, and work across the surface using a wide 'sweeping' motion.
Stop and apply extra compound as required
When the entire surface has been covered, stop the machine and allow
the compound to dry (follow manufacturer's guidance)
Attach a clean polishing pad to the machine and work

across the surface as before, until all visible polishing compound is removed.
The polishing sponge should make only light contact with the work surface.
Switch on the machine, and work across the surface using a wide 'sweeping' motion. Stop and apply extra compound as required.
When the entire surface has been covered, stop the machine and allow the compound to dry, follow manufacturer's guidance.
Attach a clean polishing bonnet to the machine and work across the surface as before, until all visible polishing compound is removed.

Ensure you have all the pieces listed. If you are missing any components, contact our customer services department at support@domu.co.uk DO NOT proceed with assembly if any components are missing.

HAND HELD SANDERS & POLISHERS

For Belt Sanders, Drum Sanders and polishers, the direction of rotation shall be indicated on the tool by an arrow, raised or sunk, or by any other means no less visible and indelible. Hold the Power Tool by insulated gripping surfaces when performing an operation where the fastener may contact hidden wiring or its own cord. Fasteners contacting a 'live' wire may make exposed metal parts of the power tool 'live' and could deliver an electric shock.

TECHNICAL SPECIFICATION

Rated Voltage 220V - 240V
Rated Power 1200W
Rated Frequency 50Hz

DECLARATION OF CONFORMITY

We:

DOMU Brands Ltd
5th Floor The Tower
Deva City Office Park
Manchester
M3 7BF

DOMU Brands Ltd
Unit 30, Finlan Road
Stakehill Industrial Estate
Middleton, Manchester
M24 2RW

Declare under our sole responsibility the product:

SKU
3515261.1

Description:

Polisher / Sander

Complies with the essential requirements of the following directives:

2006/42/EC
2014/30/EU
2011/65/EU

And the Standards:

BS EN 60745-1-2009+A11:2010, BS EN 60745-2-4:2009+A11:2011, EN 55014-1:2006+A1+A2
EN 55014-2:2015, EN 61000-3-2:2014, EN 61000-3-3:2013

Authorised Signatory on behalf of DOMU Brands Ltd.



APPLICATIONS

Speed Control Number	Technique	Application
1	Polishing	Vehicle paintwork. Be Cautious with plastic panels
3-6	Buffing	Kitchen/Bathroom Tiles
5-6	Buffing Polishing	Aluminium & Stainless Steel
1-6	Sanding	Natural Woods & Sheet Metals. Use higher speeds with higher grit sandpaper (p600+), and lower speeds with lower grit sandpaper (p40-p600)

APPLICATIONS

IMPORTANT: Below will outline the correct procedures and precautions to take. Please read the following guide to ensure correct usage of the Polisher.

WORKING WITH CAR PAINT:

Spend time centring the pad on the Pad Base. Spin it at the lowest setting (1) to ensure it is properly centred.

Higher speeds can give the illusion the pad is centred as the centrifugal forces force the foam out slightly making it appear more central.

TECHNIQUE:

The Polisher should be moved with the right arm and the left hand should only be used to hold the Polisher head to the paintwork and apply pressure.

Practice one handed to ensure you are using the right arm to move the polisher.

The Polisher should be moved from left to right in an arc.

By moving it to the right it naturally moves upwards. By moving it to the left it naturally arcs downwards.

Your arm should move slowly and smoothly keeping the pad flat to the paint at all times.

NOTE: Paint is thinner at the edges of panels so care must be taken.

If polishing across edges (such as on a car bonnet where the line of the bonnet meets the front wings) then tape off the edge of the panel not being polished.

Alternatively lift the bonnet up and have someone hold it so you can confidently polish up to the edge without running over the edge of the front wing.

WORKING WITH PLASTICS:

Plastics will not cope with the heat produced like a metal panel does.

It can be easy to 'over cook' the plastic once it reaches a certain heat it will wrinkle up rapidly and without warning this is irreversible.

It is recommended that a test is carried out on a piece of

plastic scrap so you can gauge the amount of Rotation Speed required.

On curved panels this is not possible. Focus on smooth, non jerky arm movements.

This is essential and its recommended that you try and stand with your back straight ensuring that you don't over extend yourself, moving the 'buffing arc' a little wider than the distance between your shoulders.

It is often useful to spray a dry pad with a rapid detailer spray first to lubricate the pad and prevent too much polish from soaking in.

To take this one stage further spray a dry pad with detail spray and work it onto a panel until the pad is warm and slightly moist.

This will season the pad for more effective application.

PRESSURE:

The Polisher can for the most part work under its own weight or very light pressure from the left hand. Stubborn swirls may need more pressure.

When working on side panels and curved panels, the left hand will need to support the head of the polisher and will require the application of more pressure.

More pressure will be needed here as the pad will not have the weight of the polisher over it. Again, move the polisher in arc like strokes.

IMPORTANT: Stop after each pass and allow the plastic to cool before attempting another pass.

NOTE: Plastics absorb heat, so they will take longer to cool. Plastics should not be allowed to get any warmer than luke warm.

WARNING: If too higher speed or pressure is used, there is a very high risk of burning through paintwork which is irreparable. DOMU Brands cannot be held responsible for this.

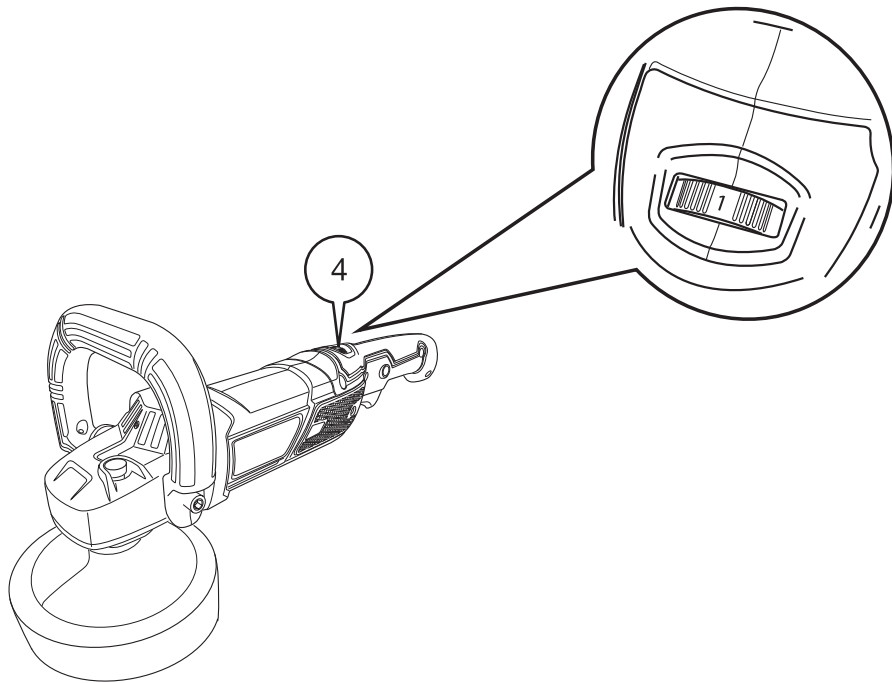
SPEED ADJUSTMENT

The speed of the machine is controlled using the Speed Control Dial. A higher number indicates a higher rotation speed (also refer to warning label on the body of the Polisher)

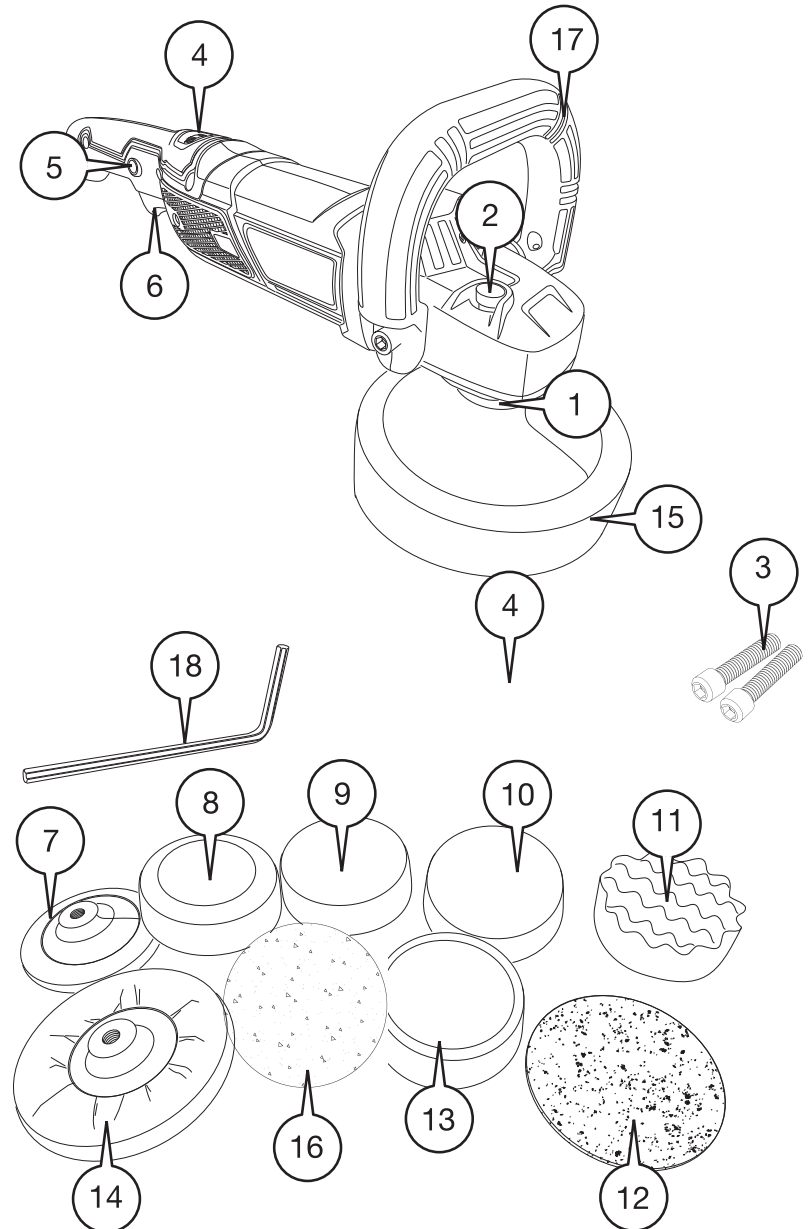
WARNING: When Polishing and detailing Vehicle surfaces, do not use a Rotation speed higher than 2 (1200) RPM.

IMPORTANT: Failure to adhere to this warning may result in damage to your vehicle.

Speed Control	Approx Speed RPM
1	800
2	1500
3	2300
4	2900
5	3300
6	3600



COMPONENTS



COMPONENTS

- | | |
|------------------------------|-------------------------------|
| 1. Spindle | 10. Medium Pad (Yellow) 150mm |
| 2. Spindle Lock Button | 11. Wave Pad (Black) 150mm |
| 3. Hex Bolt X2 | 12. Wool Pad 180mm |
| 4. Speed Control | 13. Soft Pad (Black) 150mm |
| 5. Lock Button | 14. Backing Pad 180mm |
| 6. ON/OFF Trigger Switch | 15. Hard Pad (Red) 150mm |
| 7. Backing Pad 150mm | 16. Sanding Paper |
| 8. Hard Pad (Red) 150mm | 17. D-Type Handle |
| 9. Medium Pad (Yellow) 150mm | 18. Hex Key |

Number Ref	Description	Application	Size (mm)
7	Backing Pad	Polishing	150
8	Hard Pad Red	Heavy Cutting	150
9	Medium Pad Yellow	Medium Cutting	150
10	Medium Pad Yellow	Medium Cutting	150
11	Wave Pad Black	Final Cutting	150
12	Wool Pad	Polishing	180
13	Soft Pad Black	Light Cutting	150
14	Backing Pad	Polishing	180
15	Hard Pad Red	Heavy Cutting	150

BEFORE USE

ASSEMBLING THE HANDLE

The Front Handle or D Type Handle must be fitted to the machine before use:

Use the Hex bolts provided to fit the D Type Handle via the fixing holes to either side at the front of the Polisher.

Use the supplied Hex Key to tighten the bolts that secure the handle in position.

FITTING THE BACKING PAD

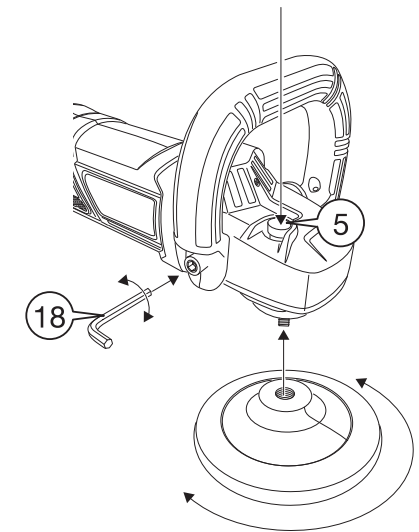
The Backing Pad must be securely fitted to the Spindle before use:

Press and hold the Spindle Lock Button with one hand, and slowly rotate the spindle with the other hand, until you feel it lock.

The backing pad can now be screwed onto the spindle and tightened.

WARNING: The backing pad is tightened by hand. Take care not to cross thread or over-tighten.

Release the spindle lock button.



OPERATION

WARNING! Always use adequate protective equipment, including eye protection, respiratory protection and hearing protection, when working with this tool.

Connect the machine to the mains power supply.

To start the machine, squeeze the ON/OFF Trigger Switch. The motor will start and take a few moments to reach full operating speed.

To stop the machine, release the ON/OFF trigger switch.

To operate the tool's lock-on function, press the Lock Button whilst holding the ON/OFF Trigger Switch.

To stop the tool once locked, squeeze and release the ON/OFF Trigger Switch.

NOTE: This Polisher is fitted with a Soft Start Function to help spread polish slowly before going to full speed.

WARNING: Always wait until the machine has come to a standstill before putting it down.

